



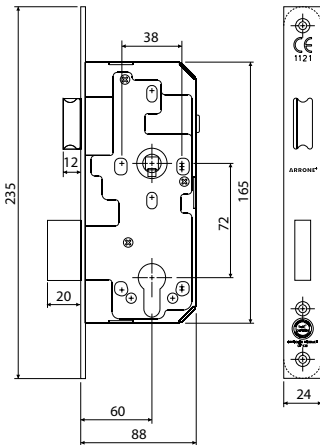
4



ARRONE® Euro Profile Commercial Grade Mortice Sashlock Case

Features

- Case: mild steel/black powder coated finish, pierced to accept bolt through furniture and escutcheons with 38 mm centres
- Backset: 60 mm (other sizes to order)
- Centres: 72 mm
- Latchbolt: nickel plated solid brass guided latchbolt, easily reversible without opening case
- Follower: 8 mm zinc alloy follower (high copper content for additional strength) with spindle gripping feature
- Deadbolt: zinc alloy single throw with 20 mm projection (high copper content for additional strength)
- Forend and striking plates available square or radius
- Suitable for sprung and most unsprung lever furniture
- Satin/polished stainless steel or polished brass forend and striking plate
- Lock with 20 mm wide forend available on request
- 316 forend and striking plates available on request



Standards and certification



Quality and performance:

Successfully type tested to all the requirements of BS EN12209:2003

| | | | | | | | | | | |
|---|---|---|----|---|---|---|---|---|---|---|
| 3 | X | 8 | 1* | 0 | G | 4 | B | A | 3 | 0 |
|---|---|---|----|---|---|---|---|---|---|---|



Fire safety: Included in a successful fire test to BS EN1634 Part 1. Assessed for use on 30, 60, 90 and 120 min timber fire doors and 4 hours on steel doors*.



CE marked: Certificate 1121-CPR-AG0067



Certifire approved product: Certificate CF530

CPR Declaration of Performance Certificate – HUK0007

Available for download – Go to www.hoppe.co.uk/service/dop-certificates

Finishes

- Satin stainless steel, polished stainless steel, polished brass

| Product ref. | Article description | Finish | Article no. |
|--------------------------|---------------------------------------|------------|-------------|
| AR910-S-60-SSS-A2 | Mortice sashlock case (square forend) | SSS | 89002597 |
| AR910-S-60-PSS | Mortice sashlock case (square forend) | PSS | 87107854 |
| AR910-S-60-PB | Mortice sashlock case (square forend) | PB | 87107855 |

| | | | |
|--------------------------|---|------------|----------|
| AR910-R-60-SSS-A2 | Mortice sashlock case (radiused forend) | SSS | 89001897 |
| AR910-R-60-PSS | Mortice sashlock case (radiused forend) | PSS | 87107857 |
| AR910-R-60-PB | Mortice sashlock case (radiused forend) | PB | 87107858 |

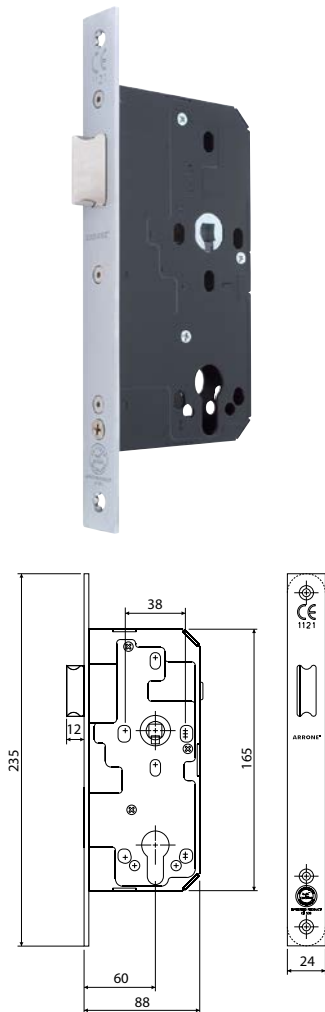
| | | | |
|-------------------------|--|------------|----------|
| AR91/81-S-13-SSS | 13 mm rebate set for square forend locks | SSS | 87107889 |
| AR91/81-S-13-PB | 13 mm rebate set for square forend locks | PB | 87108045 |

Spare fixings

| | | | |
|-------------------------|-------------------------------------|------------|---------|
| AR900/8100-FP/SD | Mortice lock metal door fixing pack | SSS | 7204710 |
|-------------------------|-------------------------------------|------------|---------|

* The AR900 Series Lock Case has been successfully fire tested with the use of an intumescent kit, the supply and fitting of this intumescent kit is essential to the products compliance with the fire test & CE marking evidence it has gained, HOPPE takes no responsibility for any door closers purchased and fitted without sufficient intumescent protection.

ARRONE® Euro Profile Commercial Grade Mortice Latch Case



Features

- Case: mild steel/black powder coated finish, pierced to accept bolt through furniture and escutcheons with 38 mm centres
- Backset: 60 mm (other sizes to order)
- Latchbolt: nickel plated solid brass guided latchbolt, easily reversible without opening case
- Follower: 8 mm zinc alloy follower (high copper content for additional strength) with spindle gripping feature
- Forend and striking plates available square or radius
- Suitable for sprung and most unsprung lever furniture
- Satin/polished stainless steel or polished brass forend and striking plate
- Latch with 20 mm wide forend available on request
- 316 forend and striking plates available on request

Standards and certification



Quality and performance:

Successfully type tested to all the requirements of BS EN12209:2003

| | | | | | | | | | | |
|---|---|---|----|---|---|---|---|---|---|---|
| 3 | X | 8 | 1* | 0 | G | - | B | 0 | 3 | 0 |
|---|---|---|----|---|---|---|---|---|---|---|



Fire safety: Included in a successful fire test to BS EN1634 Part 1. Assessed for use on 30, 60, 90 and 120 min timber fire doors and 4 hours on steel doors*.



CE marked: Certificate 1121-CPR-AG0067



Certifire approved product: Certificate CF530

CPR Declaration of Performance Certificate – HUK0009

Available for download – Go to www.hoppe.co.uk/service/dop-certificates

Finishes

- Satin stainless steel, polished stainless steel, polished brass

| Product ref. | Article description | Finish | Article no. |
|--------------------------|-------------------------------|------------|-------------|
| AR911-S-60-SSS-A2 | Mortice latch (square forend) | SSS | 89002604 |
| AR911-S-60-PSS | Mortice latch (square forend) | PSS | 87107860 |
| AR911-S-60-PB | Mortice latch (square forend) | PB | 87107861 |

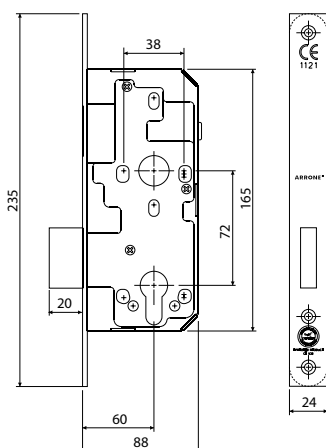
| | | | |
|--------------------------|---------------------------------|------------|----------|
| AR911-R-60-SSS-A2 | Mortice latch (radiused forend) | SSS | 89001904 |
| AR911-R-60-PSS | Mortice latch (radiused forend) | PSS | 87107863 |
| AR911-R-60-PB | Mortice latch (radiused forend) | PB | 87107864 |

| | | | |
|-------------------------|--|------------|----------|
| AR91/81-S-13-SSS | 13 mm rebate set for square forend locks | SSS | 87107889 |
| AR91/81-S-13-PB | 13 mm rebate set for square forend locks | PB | 87108045 |

Spare fixings

| | | | |
|-------------------------|-------------------------------------|------------|---------|
| AR900/8100-FP/SD | Mortice lock metal door fixing pack | SSS | 7204710 |
|-------------------------|-------------------------------------|------------|---------|

* The AR900 Series Lock Case has been successfully fire tested with the use of an intumescent kit, the supply and fitting of this intumescent kit is essential to the products compliance with the fire test & CE marking evidence it has gained, HOPPE takes no responsibility for any door closers purchased and fitted without sufficient intumescent protection.



ARRONE® Euro Profile Commercial Grade Mortice Deadlock Case

Features

- Case: mild steel/black powder coated finish, pierced to accept bolt through escutcheons with 38 mm centres
- Backset: 60 mm (other sizes to order)
- Deadbolt: zinc alloy single throw with 20 mm projection (high copper content for additional strength)
- Forend and striking plates available square or radius
- Satin/polished stainless steel or polished brass forend and striking plate
- 316 forend and striking plates available on request

Standards and certification



Quality and performance:

Successfully type tested to all the requirements of BS EN12209:2003

| | | | | | | | | | | |
|---|---|---|----|---|---|---|---|---|---|---|
| 3 | X | 8 | 1* | 0 | G | 4 | B | A | 0 | 0 |
|---|---|---|----|---|---|---|---|---|---|---|



Fire safety: Included in a successful fire test to BS EN1634 Part 1. Assessed for use on 30, 60, 90 and 120 min timber fire doors and 4 hours on steel doors*.



CE marked: Certificate 1121-CPR-AG0068



Certifire approved product: Certificate CF530

CPR Declaration of Performance Certificate – HUK0008

Available for download – Go to www.hoppe.co.uk/service/dop-certificates

Finishes

- Satin stainless steel, polished stainless steel, polished brass

| Product ref. | Article description | Finish | Article no. |
|--------------------------|---------------------------------------|------------|-------------|
| AR912-S-60-SSS-A2 | Mortice deadlock case (square forend) | SSS | 89002611 |
| AR912-S-60-PSS | Mortice deadlock case (square forend) | PSS | 87107866 |
| AR912-S-60-PB | Mortice deadlock case (square forend) | PB | 87107867 |

| | | | |
|--------------------------|---|------------|----------|
| AR912-R-60-SSS-A2 | Mortice deadlock case (radiused forend) | SSS | 89001911 |
| AR912-R-60-PSS | Mortice deadlock case (radiused forend) | PSS | 87107869 |
| AR912-R-60-PB | Mortice deadlock case (radiused forend) | PB | 87107870 |

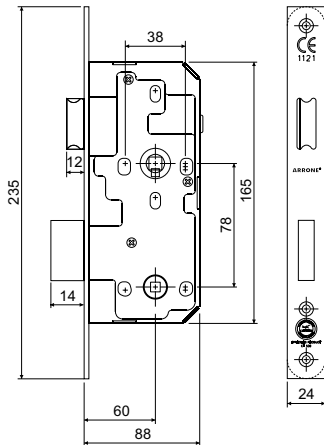
| | | | |
|-------------------------|--|------------|----------|
| AR91/81-S-13-SSS | 13 mm rebate set for square forend locks | SSS | 87107889 |
| AR91/81-S-13-PB | 13 mm rebate set for square forend locks | PB | 87108045 |

Spare fixings

| | | | |
|-------------------------|-------------------------------------|------------|---------|
| AR900/8100-FP/SD | Mortice lock metal door fixing pack | SSS | 7204710 |
|-------------------------|-------------------------------------|------------|---------|

* The AR900 Series Lock Case has been successfully fire tested with the use of an intumescent kit, the supply and fitting of this intumescent kit is essential to the products compliance with the fire test & CE marking evidence it has gained, HOPPE takes no responsibility for any door closers purchased and fitted without sufficient intumescent protection.

ARRONE® Commercial Grade Mortice Bathroom Lock



Features

- Case: mild steel/black powder coated finish, pierced to accept bolt through furniture and escutcheons with 38 mm centres
- Backset: 60 mm (other sizes to order)
- Centres: 78 mm
- Latchbolt: nickel plated solid brass guided latchbolt, easily reversible without opening case
- Follower: 8 mm zinc alloy follower (high copper content for additional strength) with spindle gripping feature
- Also supplied with 5 mm spindle sleeve for 5 mm turn spindles
- Deadbolt: zinc alloy single throw with 14 mm projection (high copper content for additional strength)
- Forend and striking plates available square or radius
- Suitable for sprung and most unsprung lever furniture
- Satin/polished stainless steel or polished brass forend and striking plate
- Lock with 20 mm wide forend available on request
- 316 forend and striking plates available on request

Standards and certification



Quality and performance:

Successfully type tested to all the requirements of BS EN12209:2003

| | | | | | | | | | | |
|---|---|---|----|---|---|---|---|---|---|---|
| 3 | X | 8 | 1* | 0 | G | - | B | 0 | 3 | 0 |
|---|---|---|----|---|---|---|---|---|---|---|



Fire safety: Included in a successful fire test to BS EN1634 Part 1. Assessed for use on 30, 60, 90 and 120 min timber fire doors and 4 hours on steel doors*.



CE marked: Certificate 1121-CPR-AG0067



Certifire approved product: Certificate CF530

CPR Declaration of Performance Certificate – HUK0010

Available for download – Go to www.hoppe.co.uk/service/dop-certificates

Finishes

- Satin stainless steel, polished stainless steel, polished brass

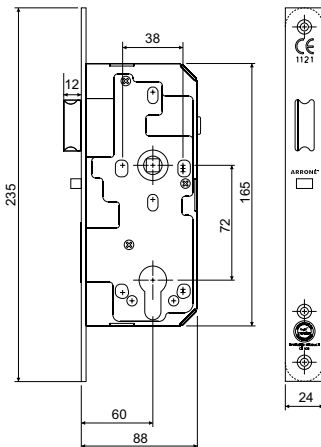
| Product ref. | Article description | Finish | Article no. |
|--------------------------|---------------------------------------|------------|-------------|
| AR913-S-60-SSS-A2 | Mortice bathroom lock (square forend) | SSS | 89002618 |
| AR913-S-60-PSS | Mortice bathroom lock (square forend) | PSS | 87107872 |
| AR913-S-60-PB | Mortice bathroom lock (square forend) | PB | 87107873 |

| | | | |
|--------------------------|---|------------|----------|
| AR913-R-60-SSS-A2 | Mortice bathroom lock (radiused forend) | SSS | 89001918 |
| AR913-R-60-PSS | Mortice bathroom lock (radiused forend) | PSS | 87107875 |
| AR913-R-60-PB | Mortice bathroom lock (radiused forend) | PB | 87107876 |

Spare fixings

| | | | |
|-------------------------|-------------------------------------|------------|---------|
| AR900/8100-FP/SD | Mortice lock metal door fixing pack | SSS | 7204710 |
|-------------------------|-------------------------------------|------------|---------|

* The AR900 Series Lock Case has been successfully fire tested with the use of an intumescent kit, the supply and fitting of this intumescent kit is essential to the products compliance with the fire test & CE marking evidence it has gained, HOPPE takes no responsibility for any door closers purchased and fitted without sufficient intumescent protection.



ARRONE® Euro Profile Commercial Grade Mortice Anti Thrust Nightlatch Case

Features

- Case: mild steel/black powder coated finish, pierced to accept bolt through furniture and escutcheons with 38 mm centres
- Backset: 60 mm (other sizes to order)
- Centres: 72 mm
- Latchbolt: nickel plated solid brass guided latchbolt, easily reversible without opening case
- Latchbolt withdrawn by lever handle or key
- Follower: 8 mm zinc alloy follower (high copper content for additional strength) with spindle gripping feature
- Forend and striking plates available square or radius
- Suitable for sprung and most unsprung lever furniture
- Satin/polished stainless steel or polished brass forend and striking plate
- 316 forend and striking plates available on request

Standards and certification



Quality and performance:

Successfully type tested to all the requirements of BS EN12209:2003

| | | | | | | | | | | |
|---|---|---|----|---|---|---|---|---|---|---|
| 3 | X | 8 | 1* | 0 | G | - | B | 0 | 3 | 0 |
|---|---|---|----|---|---|---|---|---|---|---|



Fire safety: Included in a successful fire test to BS EN1634 Part 1. Assessed for use on 30, 60, 90 and 120 min timber fire doors and 4 hours on steel doors*.



CE marked: Certificate 1121-CPR-AG0067



Certifire approved product: Certificate CF530

CPR Declaration of Performance Certificates – HUK0011 and HUK0052

Available for download – Go to www.hoppe.co.uk/service/dop-certificates

Finishes

- Satin stainless steel, polished stainless steel, polished brass

| Product ref. | Article description | Finish | Article no. |
|--------------------------|---|------------|-------------|
| AR914-S-60-SSS-A2 | Mortice nightlatch case (square forend) | SSS | 89002632 |
| AR914-S-60-PSS | Mortice nightlatch case (square forend) | PSS | 87107878 |
| AR914-S-60-PB | Mortice nightlatch case (square forend) | PB | 87107879 |

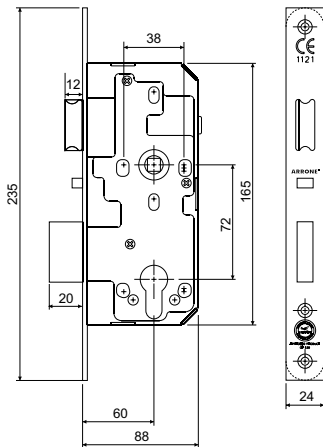
| | | | |
|--------------------------|---|------------|----------|
| AR914-R-60-SSS-A2 | Mortice nightlatch case (radiused forend) | SSS | 89001925 |
| AR914-R-60-PSS | Mortice nightlatch case (radiused forend) | PSS | 87107881 |
| AR914-R-60-PB | Mortice nightlatch case (radiused forend) | PB | 87107882 |

| | | | |
|-------------------------|--|------------|----------|
| AR91/81-S-13-SSS | 13 mm rebate set for square forend locks | SSS | 87107889 |
| AR91/81-S-13-PB | 13 mm rebate set for square forend locks | PB | 87108045 |

Spare fixings

| | | | |
|-------------------------|-------------------------------------|------------|---------|
| AR900/8100-FP/SD | Mortice lock metal door fixing pack | SSS | 7204710 |
|-------------------------|-------------------------------------|------------|---------|

* The AR900 Series Lock Case has been successfully fire tested with the use of an intumescent kit, the supply and fitting of this intumescent kit is essential to the products compliance with the fire test & CE marking evidence it has gained, HOPPE takes no responsibility for any door closers purchased and fitted without sufficient intumescent protection.



HOPPE and ARRONE® door furniture suitable for use with ARRONE® Plus AR915 Series 72 mm escape lock *

HOPPE Aluminium

138S Series (Paris)
1138 Series (Marseille)

HOPPE Stainless Steel

E138F and E138Z Series (Paris)
E1138 Series (Marseille)

ARRONE® Stainless Steel

AR361 Series
AR370 Series
AR374 Series
AR375 Series
AR461 Series

* The AR900 Series Lock Case has been successfully fire tested with the use of an intumescent kit, the supply and fitting of this intumescent kit is essential to the products compliance with the fire test & CE marking evidence it has gained, HOPPE takes no responsibility for any door closers purchased and fitted without sufficient intumescent protection.

All of these products have been either tested with or assessed for use with the AR915 ARRONE® Escape Lock and are listed in test reports/evidence.

ARRONE® Euro Profile Commercial Grade Mortice Escape Lock Case

Suitable for timber and steel doors hinged on either the right or left which require key operation externally with a single action escape function internally

Features

- Case: mild steel/black powder coated finish, pierced to accept bolt through furniture and escutcheons with 38 mm centres, backset 60 mm, centres 72 mm
- Latchbolt: nickel plated solid brass guided latchbolt, easily reversible without opening case
- Follower: 8 mm split follower with self locating plate to allow easy reversibility of the escape function. Follower made from sintered steel for additional strength and durability
- Deadbolt: zinc alloy single throw with 20 mm projection (high copper content for additional strength)
- Forend and bevelled striking plates (for smooth operation) available square or radius
- Satin/polished stainless steel or polished brass forend and striking plate
- Supplied with AR228A (100 mm) and AR228B (120 mm) split spindles for 30 mins and 1 hour timber fire doors and 4 hour steel doors.

Operation

- Anti-thrust feature means latchbolt is automatically deadlocked when door is closed, preventing card leverage
- Latch withdrawn by lever or key from outside
- Deadbolt and latchbolt withdrawn simultaneously by internal lever handle
- Latchbolt withdrawn by internal lever handle
- Deadbolt withdrawn by cylinder key from outside
- Escape mechanism easily reversed by moving self locating follower plate (no screws to be removed)

Standards and certification



Quality and performance:

Successfully type tested to all the requirements of BS EN179:2008

| | | | | | | | | | |
|---|---|---|---|---|---|---|---|---|---|
| 3 | 7 | 6 | B | 1 | 4 | 4 | 1 | A | B |
| 3 | 7 | 6 | B | 1 | 4 | 4 | 1 | A | D |

To satisfy BS EN179 this Escape Lock should only be fitted with the lever handles listed on this page to ensure compatibility with this standard



Fire safety: Included in a successful fire test to BS EN1634 Part 1. Assessed for use on 30, 60, 90 and 120 min timber fire doors and 4 hours on steel doors*.



CE marked: Certificate 1121-CPD-ABB010 (BS EN 179)

CE marked: Certificate 1121-CPR-AG0067



Certifire approved product: Certificate CF530

CPR Declaration of Performance Certificates – HUK0012 and HUK0035

Available for download – Go to www.hoppe.co.uk/service/dop-certificates

Finishes

- Satin stainless steel, polished stainless steel, polished brass

| Product ref. | Article description | Finish | Article no. |
|--------------------------|-------------------------------------|------------|-------------|
| AR915-S-60-SSS-A2 | Mortice escape lock (square forend) | SSS | 89002625 |
| AR915-S-60-PSS | Mortice escape lock (square forend) | PSS | 87107884 |
| AR915-S-60-PB | Mortice escape lock (square forend) | PB | 87107885 |

| | | | |
|--------------------------|---------------------------------------|------------|----------|
| AR915-R-60-SSS-A2 | Mortice escape lock (radiused forend) | SSS | 89001932 |
| AR915-R-60-PSS | Mortice escape lock (radiused forend) | PSS | 87107887 |
| AR915-R-60-PB | Mortice escape lock (radiused forend) | PB | 87107888 |

| | | | |
|-------------------------|--|------------|----------|
| AR91/81-S-13-SSS | 13 mm rebate set for square forend locks | SSS | 87107889 |
| AR91/81-S-13-PB | 13 mm rebate set for square forend locks | PB | 87108045 |



ARRONE® Euro Profile Commercial Grade Mortice Rollerbolt Lock Case

Features

- Case: mild steel/black powder coated finish, pierced to accept bolt through furniture and escutcheons with 38 mm centres
- Backset: 60 mm (other sizes to order)
- Centres: 72 mm
- Adjustable rollerbolt: nickel plated solid brass guided rollerbolt
- Deadbolt: zinc alloy single throw with 20 mm projection (high copper content for additional strength)
- Forend and striking plates available square or radius
- Double lipped rollerbolt strikes available separately
- Satin stainless steel forend and striking plate

Standards and certification



Quality and performance:

Successfully type tested to all the requirements of BS EN12209:2003

| | | | | | | | | | | |
|---|---|---|----|---|---|---|---|---|---|---|
| 3 | C | 8 | 1* | 0 | F | 2 | B | A | 0 | 0 |
|---|---|---|----|---|---|---|---|---|---|---|



Fire safety:

Included in a successful fire test to BS EN1634 Part 1.

Assessed for use on 30 min and 1 hour timber fire doors and 4 hours on steel doors*.



CE marked: Certificate 1121-CPD-AG0247



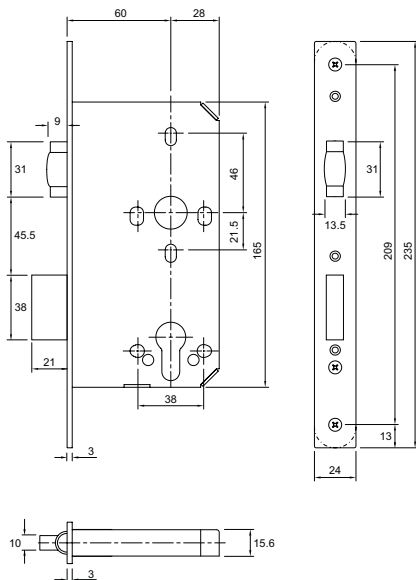
Certifire approved product: Certificate CF530

CPR Declaration of Performance Certificate – HUK0013

Available for download – Go to www.hoppe.co.uk/service/dop-certificates

Finishes

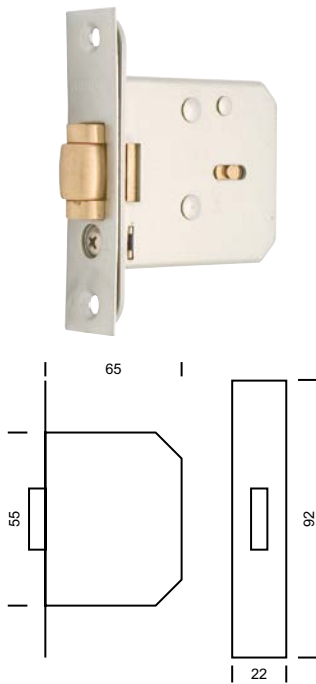
- Satin stainless steel



Spare fixings

| Product ref. | Article description | Finish | Article no. |
|---------------------------------|--|------------|-------------|
| AR916-S-60-SSS-A2 | Mortice rollerbolt lock case (square forend) | SSS | 89001457 |
| AR916-R-60-SSS-A2 | Mortice rollerbolt lock case (radiused forend) | SSS | 89001939 |
| AR916-DL-Strike-S-SSS-A2 | Double lipped strike plate (square) | SSS | 89002009 |
| AR900/8100-FP/SD | Mortice lock metal door fixing pack | SSS | 7204710 |

* The AR900 Series Lock Case has been successfully fire tested with the use of an intumescent kit, the supply and fitting of this intumescent kit is essential to the products compliance with the fire test & CE marking evidence it has gained, HOPPE takes no responsibility for any door closers purchased and fitted without sufficient intumescent protection.



ARRONE® Mortice Latches

Heavy Duty Adjustable Roller Bolt Latch

Features

- Unique patented easy adjustment method
- Adjustable roller bolt up to 15 mm projection
- Polished brass, polished chrome or satin chrome finish forend and striking plate

Finishes

- Polished brass, polished chrome, satin chrome

| Product ref. | Article description | Finish | Article no. |
|--------------------|------------------------------|-----------|-------------|
| AR/M-750-PB | Adjustable roller bolt latch | PB | 87102960 |
| AR/M-750-PC | Adjustable roller bolt latch | PC | 87102959 |
| AR/M-750-SC | Adjustable roller bolt latch | SC | 87102958 |

ARRONE® Intumescent Packs

Intumescent pack for the AR8100 and AR900 Series locks

Features

- Flat folded sheets of 1 mm thick material
- When opened up, form a pocket to surround the lock case
- 60 mm backset (other sizes to order)

Standards and certification



Fire safety: Included in a successful fire test to BS EN1634 Part 1. For use on 30, 60, 90, and 120 min timber fire doors.



| Product ref. | Article description | Article no. |
|-------------------------|---|-------------|
| AR/INT-DIN-LOCKS | To suit 72 mm lock range, 60 mm backset | 87134490 |