



Serrature da infilare a cilindro

Mortice locks for profile cylinder



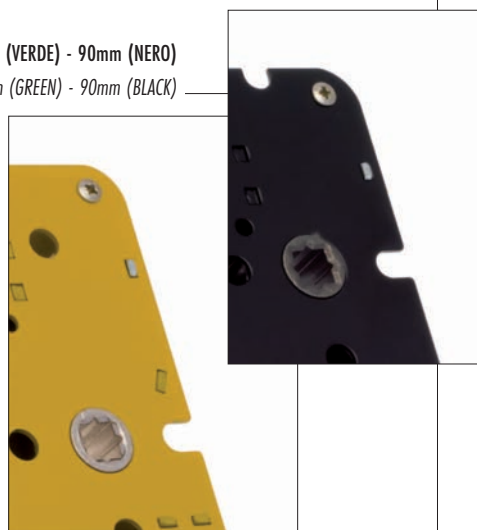
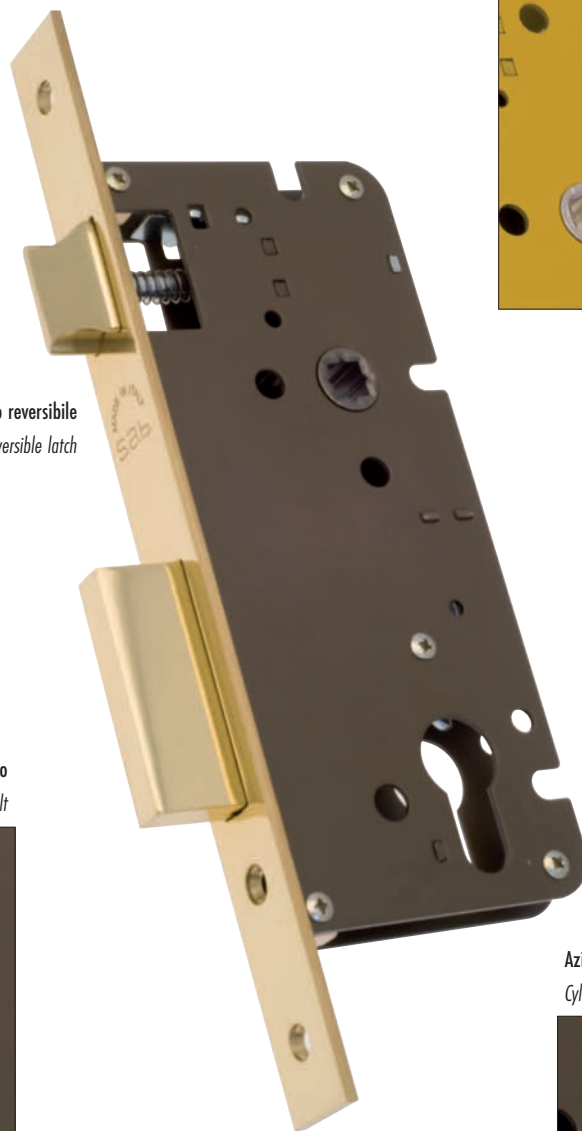
2200

Stacco maniglia 72mm (GIALLO) - 85mm (VERDE) - 90mm (NERO)
 Handle Distance 72mm (YELLOW) - 85mm (GREEN) - 90mm (BLACK)

Rullo registrabile
 Adjustable roller



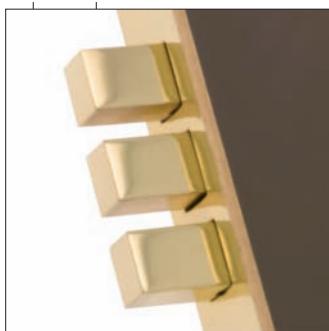
Scrocco reversibile
 Reversible latch



Fori passanti interasse DIN per l'applicazione
 di placche maniglia e rosette
 Through holes, DIN standard, to apply handles
 plates and roses

Entrate standard da 40mm a 80mm
 Standard backset from 40mm to 80mm

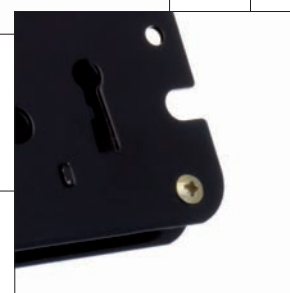
Catenaccio antistrappo con spine antitaglio
 Anti-tamper proof and anti-saw dead bolt



Frontale Ottone 22mm - Bordo quadro o Tondo
 Brass frontal plate 22mm - Square or Round edge



Azionamento a cilindro, Quadro 8mm, Chiave patent
 Cylinder movement, square hole 8mm, patent key



Serie
2200



Serrature da infilare a cilindro
 Mortice locks for profile cylinder

2200/90

Catenaccio Antistrappo e Scrocco
2 Mandate
Azionamento a cilindro

FINITURA DI SERIE

- Piastra frontale, Catenaccio, Scrocco OLV

DOTAZIONE

- Contropiastra con aletta Art. 357 OLV
- Vaschetta coprifresata scrocco e catenaccio Art. C371
- Viti di fissaggio
- **CILINDRO ESCLUSO**

Tamper proof bolt and latch
2 Turns
Cylinder movement

STANDARD FINISHINGS

- Front plate, Bolt, Latch OLV

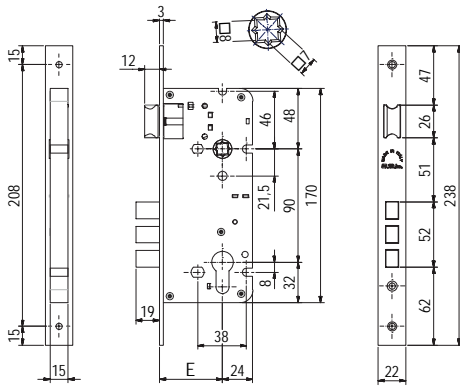
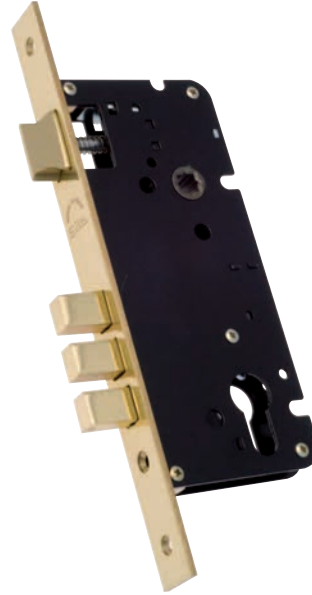
ACCESSORIES

- Striking plate with tab Art. 357 OLV
- Plastic bolt and latch milling cover Art. C371
- Fixing screws
- **CYLINDER NOT INCLUDED**

Serie **2200**



Serrature da infilare a cilindro
 Morrice locks for profile cylinder



2200/90

Catenaccio Antistrappo e Scrocco | 2 Mandate | Azionamento a cilindro

Tamper proof bolt and latch | 2 Turns | Cylinder movement

Codice Code	Finitura Finishing						
02200 90 45 ___ 7	---						45
02200 90 50 ___ 7	---	2	22x3x238	90			50
02200 90 60 ___ 7	---						60
02200 90 70 ___ 7	---						70

Finitura Finishing	Finiture Standard Standard Finishings				Finiture Speciali Special Finishings				
	OLV	OS	OCL OCS ONS	OB OGR OGM	PLO	AB SFE	OBL OBS	PVD	XSO INOX

2100-2105

Catenaccio Antistrappo
1-2 Mandate
Azionamento a cilindro

FINITURA DI SERIE

- Piastra frontale, Catenaccio OLV

DOTAZIONE

- Contropiastra Art. 354 OLV
- Vaschetta coprifresata scrocco e catenaccio Art. C371
- Viti di fissaggio
- CILINDRO ESCLUSO

Tamper proof bolt
1-2 Turns
Cylinder movement

STANDARD FINISHINGS

- Front plate, Bolt OLV

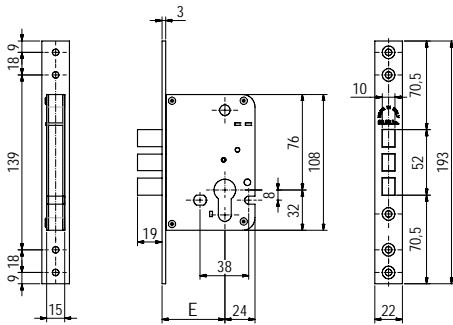
ACCESSORIES

- Striking plate Art. 354 OLV
- Plastic bolt and latch milling cover Art. C371
- Fixing screws
- CYLINDER NOT INCLUDED

Serie **2200**



Serrature da infilare a cilindro
 Mortice locks for profile cylinder



2100 Catenaccio Antistrappo | 1-2 Mandate | Azionamento a cilindro
2105 Tamper proof bolt | 1-2 Turns | Cylinder movement

Codice Code	Finitura Finishing					
02100 45 ___ 4				45		
02100 50 ___ 4				50		
02100 60 ___ 4		2		60		
02100 70 ___ 4				70		
02100 80 ___ 4			22x3x193	80	1	25
02105 45 ___ 4				45		
02105 50 ___ 4				50		
02105 60 ___ 4		1		60		
02105 70 ___ 4				70		
02105 80 ___ 4				80		

Finiture Standard | Standard Finishings

Finiture Speciali | Special Finishings

Finitura Finishing	OLV	OS	OCL OCS ONS	OB OGR OGM	PLO	AB SFE	OBL OBS	PVD	XSO INOX



Serrature a doppia mappa da infilare

Mortise locks with double bitted keys



DM

510/90

2 Mandate
Catenaccio antistrappo e Scrocco

FINITURA DI SERIE

- Scatola, Coperchio, Piastra in acciaio zincato
- Catenaccio cromato

DOTAZIONE

- 3 chiavi cifrate Art. 53 (a richiesta Art. 53L)
- Bocchetta copritoppa in ottone Art. 9 e 10
- Contropiastra in acciaio zincato Art. 62
- Viti di montaggio

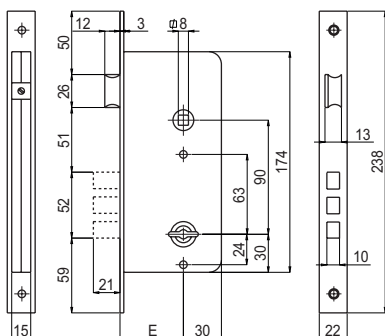
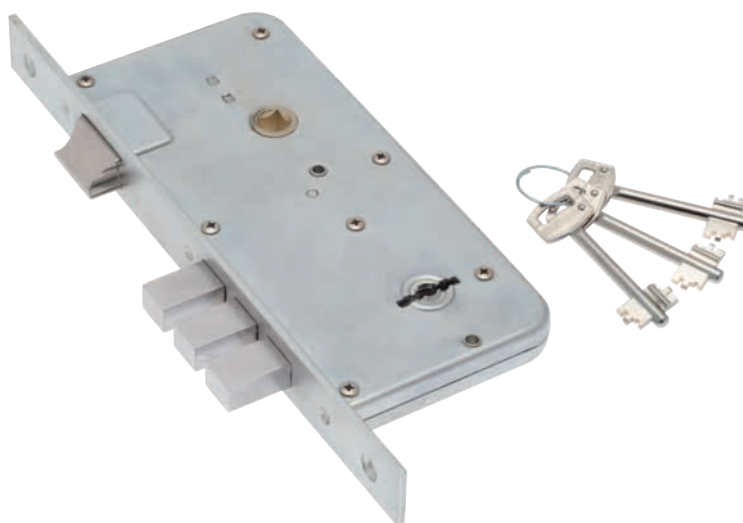
2 Turns
Anti-tamper Bolt and Latch

STANDARD FINISHINGS

- Galvanised steel Box, Cover and front plate
- Chrome-plated bolt

ACCESSORIES

- 3 coded keys Art. 53 (on request Art. 53L)
- Brass key hole escutcheons Art. 9 and 10
- Galvanised steel striking plate Art. 62
- Fixing screws



510/90

2 Mandate | Catenaccio antistrappo e Scrocco

2 Turns | Anti-tamper Bolt and Latch

Codice Code	Finitura Finishing					
00510 90 50 3C 00	---	2	3	22x3x238	90	1 25

Serie **DM 400-500-600**



Serrature a doppia mappa da infilare
 Mortice locks with double bitted keys

530/3

2 Mandate, triplice chiusura
Catenaccio antistrappo e Scrocco

FINITURA DI SERIE

- Scatola, Coperchio, Piastra in acciaio zincato
- Catenaccio cromato

DOTAZIONE

- 3 chiavi cifrate Art. 53 (a richiesta Art. 53L)
- Bocchetta copritoppa in ottone Art. 9 e 10
- Contropiastra in acciaio zincato Art. 66
- Viti di montaggio
- 2 piastrine guida catenacciolo art. 76
- Contropiastrina catenacciolo superiore art. 77
- Pozzetto a pavimento art. 78
- KIT ASTE KAS7475 A RICHIESTA

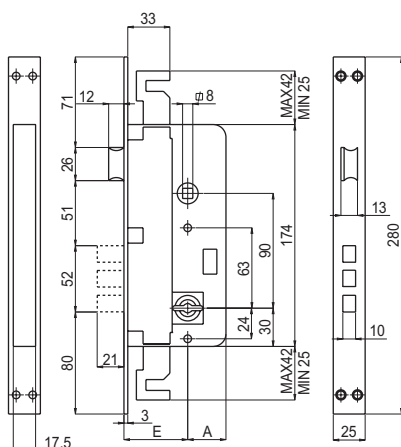
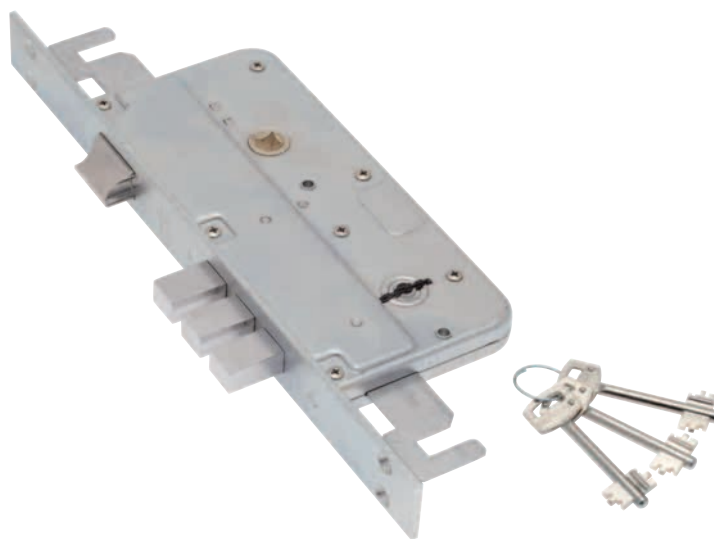
2 Turns triple locking points
Anti-tamper Bolt and Latch

STANDARD FINISHINGS

- Galvanised steel Box, Cover and front plate
- Chrome-plated bolt

ACCESSORIES

- 3 coded keys Art. 53 (on request Art. 53L)
- Brass key hole escutcheons Art. 9 and 10
- Galvanised steel striking plate Art. 66
- Fixing screws
- 2 guide plate for rod art. 76
- Strike plate for top rod art. 77
- Socket for door bolt art. 78
- RODS KIT KAS7475 ON REQUEST



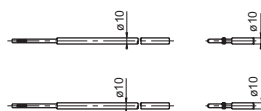
530/3

2 Mandate, triplice chiusura | Catenaccio antistrappo e Scrocco

2 Turns triple locking points | Anti-tamper Bolt and Latch

Codice Code	Finitura Finishing						
00530 30 50 3C 00	---	2	3	25x3x280	90	1	14

Accessori a Richiesta / Accessories on Request



KAS7475

Kit aste di collegamento

Connecting rods kit

Codice Code	Finitura Finishing		
KAS7475	---	6	

Serie
DM 400-500-600



Serrature a doppia mappa da infilare
Moritice locks with double bitted keys

634/3

4 Mandate tiplice chiusura
Catenaccio a pioli e Scrocco
Frontale serratura 25x3x265

FINITURA DI SERIE

- Scatola, Coperchio, Piastra in acciaio zincato
- Catenaccio cromato

DOTAZIONE

- 3 chiavi cifrate Art. 53 (a richiesta Art. 53L)
- Bocchette copritoppa in ottone Art. 9 e 10
- Contropiastra in acciaio zincato Art. 68
- Viti di montaggio
- 2 piastrine guida catenaccio art. 76
- Contropiastrina catenacciolo superiore art. 77
- Pozzetto a pavimento art. 78

KIT ASTE KAS7475 A RICHIESTA

4 Turns triple locking points
Multi-Bolt and Latch
Frontal Plate 25x3x265

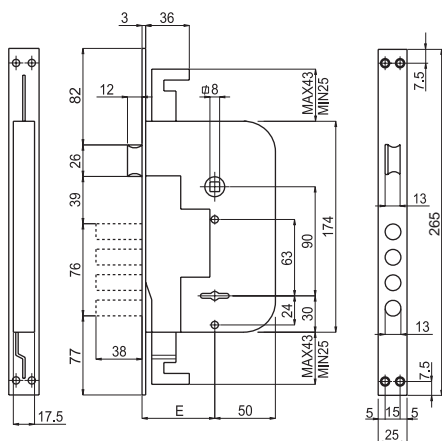
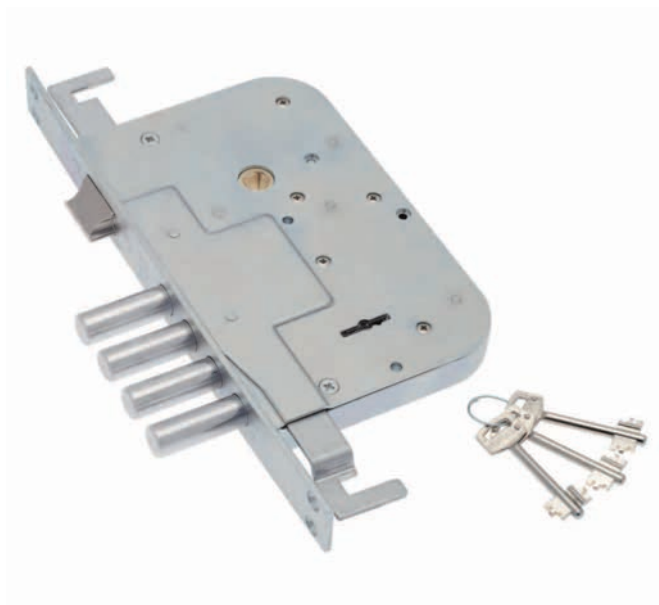
STANDARD FINISHINGS

- Galvanised steel Box, Cover and front plate
- Chrome-plated bolt

ACCESSORIES

- 3 coded keys Art. 53 (on request Art. 53L)
- Brass key hole escutcheons Art. 9 and 10
- Galvanised steel striking plate Art. 68
- Fixing screws
- 2 guide plate for rod art. 76
- Strike plate for top rod art. 77
- Socket for door bolt art. 78

RODS KIT KAS7475 ON REQUEST



634/3

4 Mandate tiplice chiusura | Catenaccio a pioli e Scrocco | Frontale serratura 25x3x265
4 Turns triple locking points | Multi-Bolt and Latch | Frontal Plate 25x3x265

Codice Code	Finitura Finishing							
00634 30 60 3C 00	---	4	3	25x3x265	90	1	14	

Serie **DM 400-500-600**



Serrature a doppia mappa da infilare
Morice locks with double bitting keys