

MASTER KEY SYSTEMS

MADE
IN
ITALY

CYLINDER



safeguarding your security

MASTER KEYING CHART FOR CHAMPIONS® SYSTEMS

Instructions to fill the form

The following page shows a view of the keying chart to be filled while ordering Champions® master key systems. We ask to fill clearly the necessary fields by following the instructions below.

Mottura Serrature S.p.A., reserves to vary technical features of cylinders and components without previous notice. Please remember that master key system reduce cylinder safety

MOTTURA		MOTTURA SERRATURE DI SICUREZZA S.P.A. Strada Antica di Francia, 34 10057 Sant'Ambrogio - Torino - Italy Tel. 011.93.43.111 Fax 011.93.12.427 www.mottura.it		QUALITY SYSTEM CERTIFICATION DNV-GL ISO 9001		Master keys		Q.ty											
CHAMPIONS MASTER KEY SYSTEMS						Key designation		Q.ty											
System code :		Invoice code :		Code Marc.		Housekeeper		2											
Author :		Date :		Code Marc.		Technician		2											
Customer :		Hardware store		Code Marc.		Flat 1		4											
Chart :		Building		Code Marc.		Flat 2		4											
Code Marc.		Code Marc.		Code Marc.		Flat 3		4											
Code Marc.		Code Marc.		Code Marc.		Flat 4		4											
Code Marc.		Code Marc.		Code Marc.		Flat 4		4											
Code Marc.		Code Marc.		Code Marc.		Flat 4		4											
Cylinders																			
N.	Code Marc.	Door-rooms	Article code	Q.ty	Type	Keys	N.	1	2	3	4	5	6	7	8	29	30	31	32
1		Flat 1	C48P315101	2	KA						X								
2		Flat 2	C48P315101	1								X							
3		Flat 3	C48P315101	1									X						
4		Flat 4	C48P315101	1										X					
5		Front door	C48D314101	1				X		X	X	X	X	X					
6		Pedestrian gate	C48D313101	1				X	X	X	X	X	X	X					
7		Boiler room	C48D313101	1					X	X	X	X	X						
8																			
9		5 a																	
10			5 b																
11																			
12																			
13																			
14																			
15																			
16																			
17																			
18																			
19																			
20																			

N.B.: When ordering, specify the possibility of future increases; if not specified it will be impossible to do so later.

Customer's signature:

- 1 Enter the name of the **Author** in the proper field.
- 2 Enter the current **Date** in the proper field.
- 3 Enter the **Client** information in the proper field.
- 4 Enter the **System** name in the proper field.
- 5 Enter all of the **Cylinders** that make up the system, indicating for each :
 - a. **Door or Room** designation;
 - b. **Article** code ;
 - c. **Quantity**, must be equal to **1**, unless relative to two or more cylinders with same keys (**KA**);
 - d. **Type**, in special cases of same (**KA**);
 - e. Number of copies of **individual keys** (keys that only open the cylinder in question). If no individual keys are to be requested, leave blank, and if you plan on a future expansion, enter 0.

- 6 Enter all of the desired **Master keys** (keys that open more than one cylinder) indicating for each:
 - a. **Key** designation, or user designation;
 - b. **Quantity** of copies;
 - c. Which cylinders they must open, indicated by an **X** in the box at the intersection of the key column and the cylinder row.

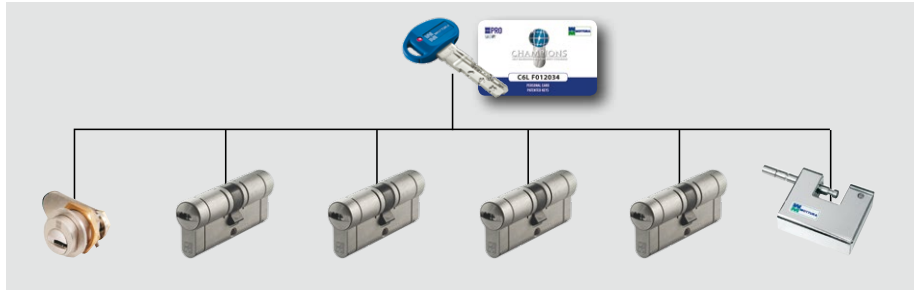
N.B. : The fields "**System code**", "**Invoice code**" and "**Code Marc.**", highlighted in yellow, **MUST NOT BE COMPLETED**; these codes will be automatically assigned by the Mottura Serrature S.p.A. host computer.

If not otherwise specified, cylinders are supplied in satin nickel finish..

Master key systems are supplied with ONLY ONE owner's card.
Additional cards supplied on request (please contact the company).

KEYED ALIKE KA

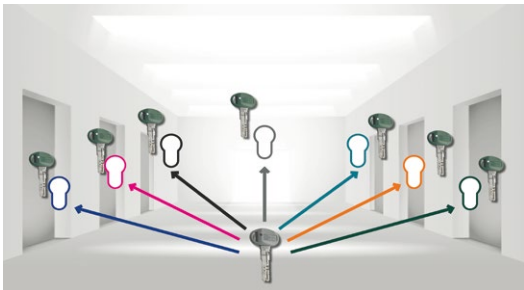
System composed of several cylinders with the same code that can be opened with the same key.



	NON-RESTRICTED KEY DUPLICATION	KEY DUPLICATION BY AUTHORIZED CENTRE	PROTECTED KEY DUPLICATION			PROTECTED E CONTROLLED KEY DUPLICATION
	C10	PRO MODULAR	C28PLUS	C39	CP6	C55
NEW CODE OR AS PER SAMPLE	Half cylinder, thumb turn cylinder, padlock, locks, latches					
	Double cylinder					
PRICE DECREASE	(for each key) with respect to standard supply					
PRICE SURCHARGE	(for each key) with respect to standard supply					

MASTER KEY SYSTEM MK

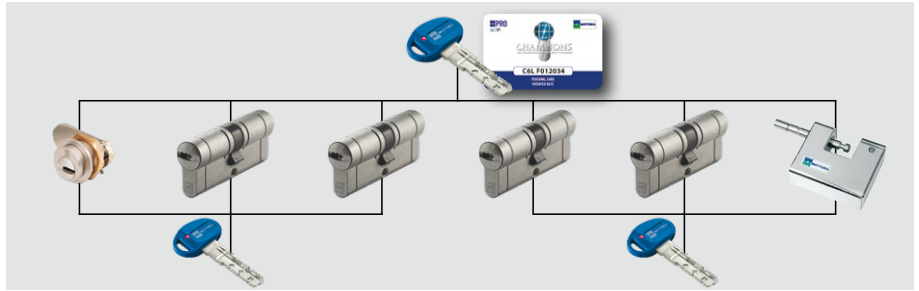
A single master key opens all the cylinders in the system, while each of the individual keys opens its own cylinder.



	NON-RESTRICTED KEY DUPLICATION	KEY DUPLICATION BY AUTHORIZED CENTRE	PROTECTED KEY DUPLICATION			PROTECTED E CONTROLLED KEY DUPLICATION
	C10	PRO MODULAR	C28PLUS	C39	CP6	C55
NEW CODE OR AS PER SAMPLE UP TO 20 CYLINDERS	Half cylinder, thumb turn cylinder, padlock, locks, latches					
	Double cylinder					
NEW CODE OR AS PER SAMPLE OVER 21 CYLINDERS	Half cylinder, thumb turn cylinder, padlock, locks, latches					
	Double cylinder					
FIRST MASTER KEY ENCLOSED	MASTER KEYS ADDITIONAL TO THE COST OF THE PRICE SURCHARGE					
PRICE DECREASE	(for each key) with respect to standard supply					
PRICE SURCHARGE	(for each key) with respect to standard supply					

Master key systems are supplied with **ONLY ONE** owner's card.

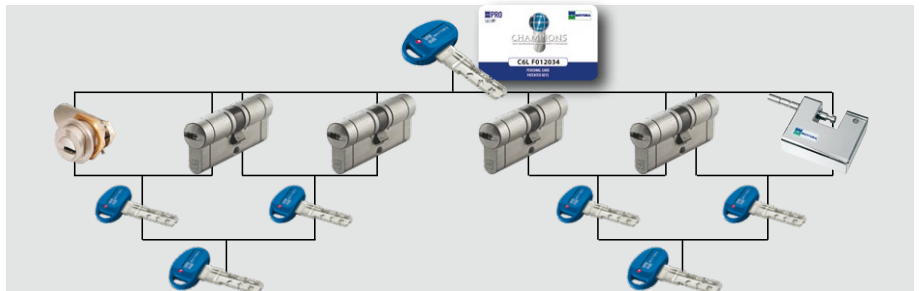
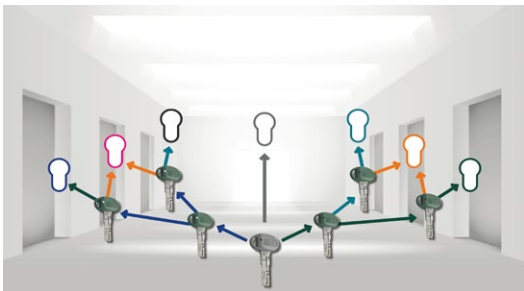
GROUP MASTER KEY SYSTEM GMK - Each room can be opened by its own key or by a master key that opens the cylinders in an entire area or department, but not those in other groups of rooms; finally, a general master key opens the cylinders of all departments.



NON-RESTRICTED KEY DUPLICATION	KEY DUPLICATION BY AUTHORIZED CENTRE	PROTECTED KEY DUPLICATION			PROTECTED E CONTROLLED KEY DUPLICATION
C10	PRO MODULAR	C28PLUS	C39	CP6	C55

NEW CODE OR AS PER SAMPLE UP TO 20 CYLINDERS	Half cylinder, thumb turn cylinder, padlock, locks, latches Double cylinder
NEW CODE OR AS PER SAMPLE OVER 21 CYLINDERS	Half cylinder, thumb turn cylinder, padlock, locks, latches Double cylinder
FIRST MASTER KEY ENCLOSED	MASTER KEYS ADDITIONAL TO THE COST OF THE PRICE SURCHARGE
PRICE DECREASE	(for each key) with respect to standard supply
PRICE SURCHARGE	(for each key) with respect to standard supply

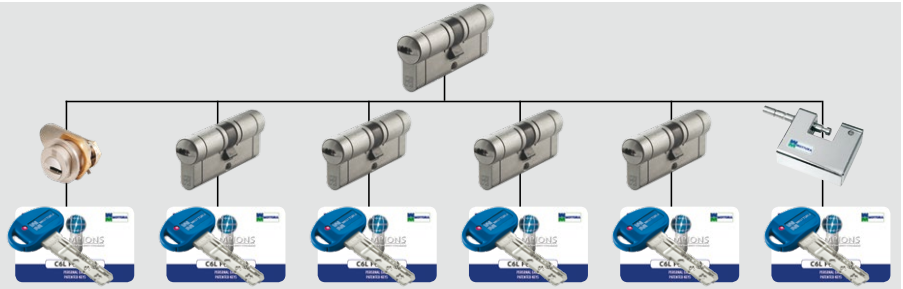
GENERAL MASTER KEY SYSTEM GGMK - Every room can be opened by its own key or a master key that opens the cylinders of an entire area or department, but not those of other groups of rooms. One master key opens several groups of cylinders. One general master key opens all cylinders in all departments.



NON-RESTRICTED KEY DUPLICATION	KEY DUPLICATION BY AUTHORIZED CENTRE	PROTECTED KEY DUPLICATION			PROTECTED E CONTROLLED KEY DUPLICATION
C10	PRO MODULAR	C28PLUS	C39	CP6	C55

NEW CODE OR AS PER SAMPLE UP TO 20 CYLINDERS	Half cylinder, thumb turn cylinder, padlock, locks, latches Double cylinder
NEW CODE OR AS PER SAMPLE OVER 21 CYLINDERS	Half cylinder, thumb turn cylinder, padlock, locks, latches Double cylinder
FIRST MASTER KEY ENCLOSED	MASTER KEYS ADDITIONAL TO THE COST OF THE PRICE SURCHARGE
PRICE DECREASE	(for each key) with respect to standard supply
PRICE SURCHARGE	(for each key) with respect to standard supply

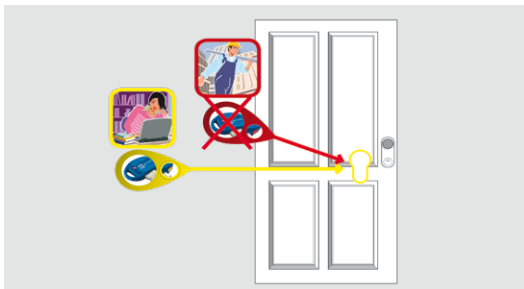
MAIN LOCK SYSTEM CC - In addition to opening its own cylinder (but not other cylinders in the system), each key also opens the main lock. Every key of this chart is considered a master key.



NON-RESTRICTED KEY DUPLICATION	KEY DUPLICATION BY AUTHORIZED CENTRE	PROTECTED KEY DUPLICATION			PROTECTED E CONTROLLED KEY DUPLICATION
C10	PRO MODULAR	C28PLUS	C39	CP6	C55

NEW CODE OR AS PER SAMPLE	Half cylinder, thumb turn cylinder, padlock, locks, latches						
	Double cylinder						
PRICE DECREASE	(for each key) with respect to standard supply						
PRICE SURCHARGE	(for each key) with respect to standard supply						

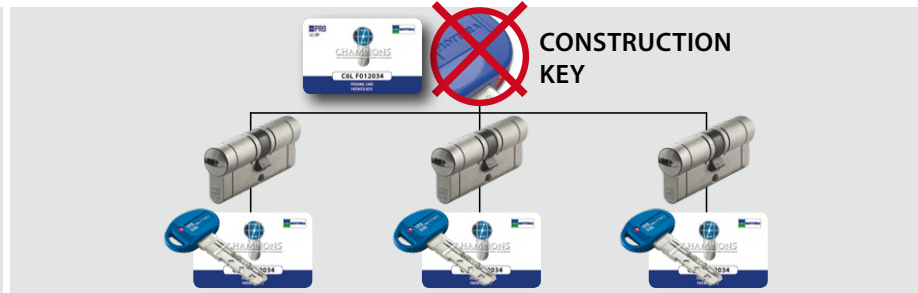
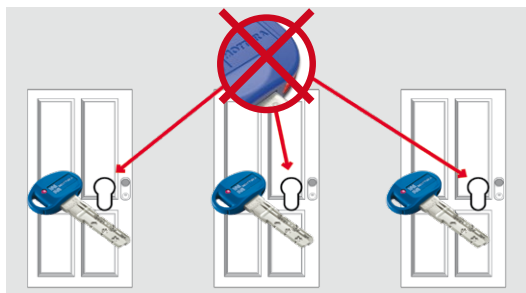
SYSTEM WITH CONSTRUCTION KEY CA - A first key is used during installation, after which it is replaced with a new, one sealed set of keys which excludes all keys previously used by modifying the code. Construction KEY SYSTEM (CA) is available for all CHAMPIONS® levels.



NON-RESTRICTED KEY DUPLICATION	KEY DUPLICATION BY AUTHORIZED CENTRE	PROTECTED KEY DUPLICATION			PROTECTED E CONTROLLED KEY DUPLICATION
C10	PRO MODULAR	C28PLUS	C39	CP6	C55

FOR ALL CYLINDER SYSTEMS							
PRICE DECREASE	(for each key) with respect to standard supply						
PRICE SURCHARGE	(for each key) with respect to standard supply						

SYSTEM WITH GROUP CONSTRUCTION KEY CG - A first key (construction key), the same for the whole group, is used during installation, after which it is replaced with a new, sealed set of keys which excludes all keys previously used by modifying the code. Construction GROUP KEY SYSTEM (CG) is available for all CHAMPIONS® levels.



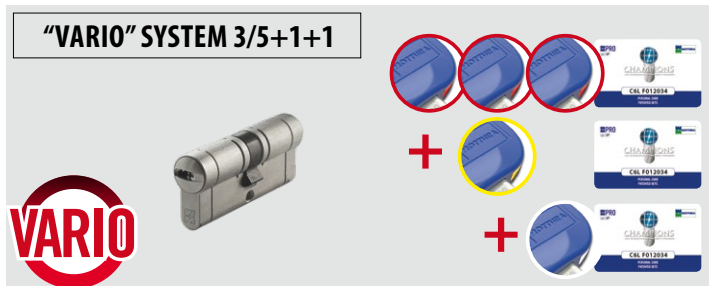
	NON-RESTRICTED KEY DUPLICATION	KEY DUPLICATION BY AUTHORIZED CENTRE	PROTECTED KEY DUPLICATION			PROTECTED E CONTROLLED KEY DUPLICATION
	C10	PRO MODULAR	C28PLUS	C39	CP6	C55
HALF CYLINDER, THUMB TURN CYLINDER						
Double cylinder						
FIRST MASTER KEY ENCLOSED	MASTER KEYS ADDITIONAL TO THE COST OF THE PRICE SURCHARGE					
PRICE DECREASE (for each key) with respect to standard supply						
PRICE SURCHARGE (for each key) with respect to standard supply						

Supplied : n.1 card for construction key + n.1 card for cylinder.

n. 1 construction key per 5 cylinder group (example: n.3 cylinders - n.1 key; n.7 cylinders - n.2 keys; n.50 cylinders - n.10 keys)

VARIO SYSTEM - Each cylinder in the CHAMPIONS® "Vario" system comes with 3 key levels – A, B, C. Each type has a unique code and is packed in a separately sealed packet. In case A key is lost or stolen, B key is inserted into the cylinder and A key is automatically excluded. The same mechanism is used to enable C key and automatically disable B key.

CHAMPIONS® "VARIO" IS AVAILABLE IN TWO VERSIONS :



3/5 main keys with red insert (A) - KEYS BLISTER

For normal use

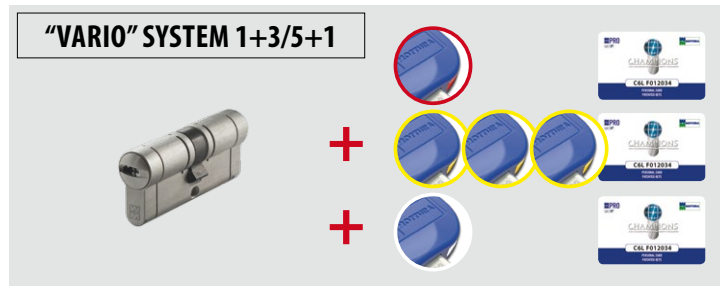
1 first emergency key with yellow insert (B) - KEYS BLISTER

Used if a main key is lost or stolen: once inserted in the cylinder, it automatically excludes the previously used keys

1 second emergency key with white insert (C) - THE SEALED PACKET

If the yellow key is lost or stolen, this key is used to change the code of the cylinder again and to automatically exclude all previous keys

When ordering add the initial V to the Champions® code and specify the requested number of keys, for example **CP8V313101/V keys 3+1+1**



1 construction key with red insert (A) - KEYS BLISTER

For use during installation

3 main keys with yellow insert (B) - KEYS BLISTER

Upon completion of work, these keys are used to recode the cylinder and to automatically exclude the red key.

1 emergency key with white insert (C) - THE SEALED PACKET

In case a main key is lost or stolen, this key is used to recode the cylinder again and to exclude all previously used keys

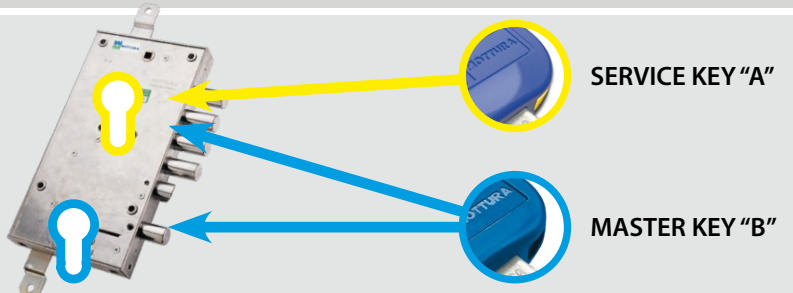
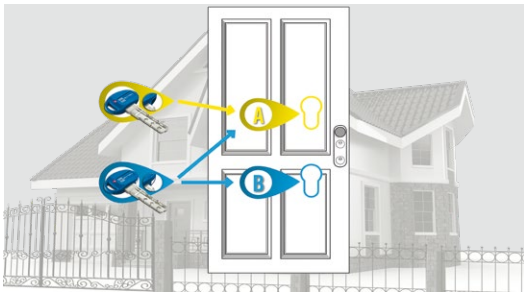
	NON-RESTRICTED KEY DUPLICATION	KEY DUPLICATION BY AUTHORIZED CENTRE	PROTECTED KEY DUPLICATION		PROTECTED E CONTROLLED KEY DUPLICATION
	C10	PRO MODULAR	C28PLUS	C39	C55

FOR ALL CYLINDER SYSTEMS

PRICE DECREASE (for each key) with respect to standard supply

PRICE SURCHARGE (for each key) with respect to standard supply

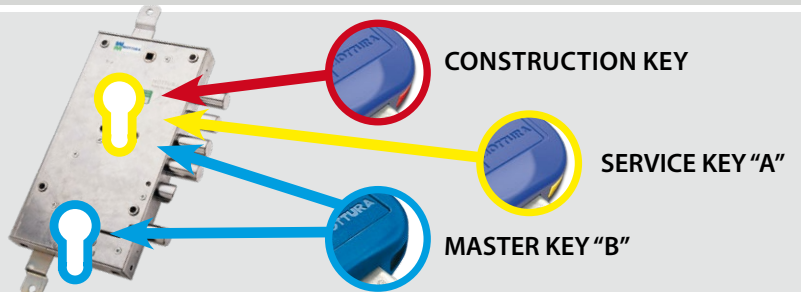
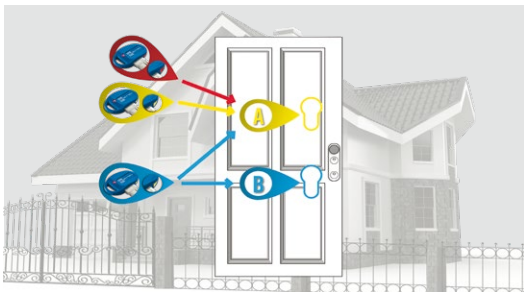
“TANDEM” SYSTEM WITH SERVICE AND MASTER KEYS



NON-RESTRICTED KEY DUPLICATION	KEY DUPLICATION BY AUTHORIZED CENTRE	PROTECTED KEY DUPLICATION			PROTECTED E CONTROLLED KEY DUPLICATION
C10	PRO MODULAR	C28PLUS	C39	CP6	C55

TANDEM IS A MASTER KEY SYSTEM consisting of a pair of MOTTURA CHAMPIONS® to be installed on a double cylinder lock. You can order a pair of matched CHAMPIONS® (A+B) in which: cylinder A has a service function; cylinder B has a master key function. The CHAMPIONS® master key can open the service champions®, **but not vice versa**. This function is available for CHAMPIONS® in all versions. All models are supplied with 5 master keys + 2 service keys.

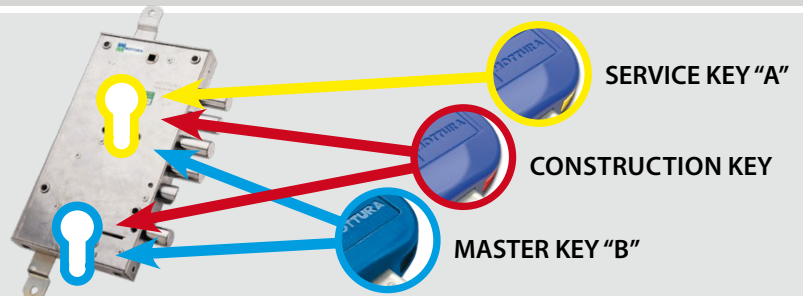
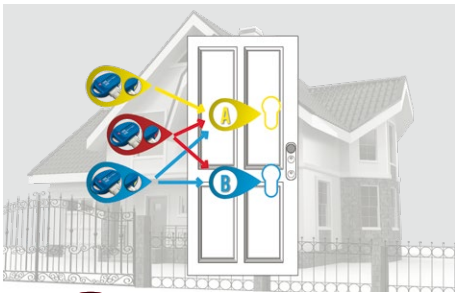
“TANDEM-CA” SYSTEM WITH CONSTRUCTION, SERVICE AND MASTER KEYS



NON-RESTRICTED KEY DUPLICATION	KEY DUPLICATION BY AUTHORIZED CENTRE	PROTECTED KEY DUPLICATION			PROTECTED E CONTROLLED KEY DUPLICATION
C10	PRO MODULAR	C28PLUS	C39	CP6	C55

TANDEM-CA IS A MASTER KEY SYSTEM consisting of a pair of MOTTURA CHAMPIONS® to be installed on a double cylinder lock. You can order a pair of matched CHAMPIONS® (A+B) in which: cylinder A has a service function with construction key; cylinder B has a master key function. The construction key is disabled by the 2 service keys (A). The CHAMPIONS® master key can open the service CHAMPIONS®, **but not vice versa**. This function is available for CHAMPIONS® in all versions. All models are supplied with 5 master keys + 2 service keys + 1 construction key.

"TANDEM-CA" SYSTEM WITH COMMON CONSTRUCTION KEY, SERVICE AND MASTER KEYS



TANDEM-CA

NON-RESTRICTED KEY DUPLICATION	KEY DUPLICATION BY AUTHORIZED CENTRE	PROTECTED KEY DUPLICATION		PROTECTED & CONTROLLED KEY DUPLICATION
C10	PRO MODULAR	C28PLUS	C39	C55

TANDEM-CA with common construction key is a master key system consisting of a pair of MOTTURA CHAMPIONS® to be installed on a double cylinder lock. Cylinder "A" has a service function; cylinder "B" has a master key function. The construction key can open both cylinders and will be disabled by the 2 service keys "A" and by 5 master key "B".

The CHAMPIONS® master key (B) can open the service CHAMPIONS® (A), **but not vice versa**.

All models are supplied with 5 master keys + 2 service keys + 1 construction key (the number of keys can be changed request).

MATIC 1000 - A construction key with black grip (the same for groups of cylinders) allows to manage up to 1600 different cylinders and is automatically disabled on the first use of the MASTER key to each individual cylinder. The construction key function is notably increased with the MATIC 1000 option.



MATIC 1000

Supplied with (1+5):
One key any 5 cylinders

FOR ALL CYLINDER SYSTEMS

PRICE DECREASE	(for each key) with respect to standard supply
PRICE SURCHARGE	(for each key) with respect to standard supply
PRICE SURCHARGE	(for each key MATIC1000) with respect to standard supply

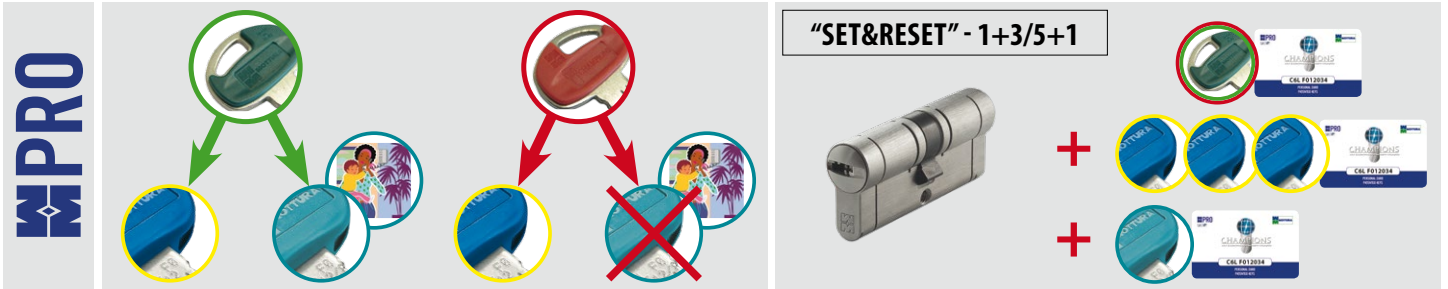
KEY DUPLICATION BY AUTHORIZED CENTRE



PRO MODULAR

AVAILABLE FOR PRO CHAMPIONS® "MOTTURA" KEY PROFILE VERSION ONLY. IT IS NOT POSSIBLE TO CUSTOM PROFILES.

SET & RESET SERVICE KEY OPTION ON CHAMPIONS® PRO ONLY - An absolutely outstanding technical innovation: both master and service keys work on the same cylinder, but the service key can be temporarily disabled and then enabled again later. For example, when going on holiday, you may block access to those who hold service keys and restore it on your return.



GREEN SIDE
the service key operates normally. The cylinder is opened both by the blue master key and by the turquoise service key.

RED SIDE
the service key DOES NOT operate. The cylinder is only opened by the blue master key.

1 key with green and red half-shell,
used to activate / deactivate the service key.

3/5 blue master key
allows the normal use of the cylinder (always).

1 turquoise service key

WARNING Add AR to the cylinder code (Es.CP4D313101/AR). Specify number and type of requested keys in sequence as follows:

N. SET/RESET KEYS + N. MASTER KEYS + N. SERVICE KEYS

	KEY DUPLICATION BY AUTHORIZED CENTRE		
	PRO	SERVICE	SET/RESET
FOR ALL CYLINDER SYSTEMS			
PRICE DECREASE (for each key) with respect to standard supply			
PRICE SURCHARGE (for each key) with respect to standard supply			
PRICE SURCHARGE (for each SERVICE key) with respect to standard supply			
PRICE SURCHARGE (for each SET/RESET key) with respect to standard supply			

NEW CYLINDER
The BLUE MASTER KEY **ALWAYS OPEN** the cylinder.
The TURQUOISE SERVICE KEY **IS ABLE TO OPEN** the cylinder.

DEACTIVATE
The BLUE MASTER KEY **ALWAYS OPEN** the cylinder.
The TURQUOISE SERVICE KEY **IS TEMPORARILY NOT ABLE TO** operate the cylinder.

ACTIVATE
The BLUE MASTER KEY **ALWAYS OPEN** the cylinder.
The TURQUOISE SERVICE KEY **IS ABLE TO OPEN** the cylinder again.

The package contains: the cylinder, keys, 3 card of property, installation instructions and fixing screw.
To guarantee maximum security keys and cards are sealed and separated according to the version chosen.
Available FOR CHAMPIONS® PRO ONLY on "Mottura" key profile version. It is NOT possible to custom profiles.