

RS1 Re-keying Cam Lock

The high security cylinder locks include 5 international patents.

Characteristics

- High number of combinations
- Protected and controlled key duplication
- Patented keys

Technical features:

- Rotor (inner plug) in brass nickel plated
- Stator (lock housing) in brass nickel plated
- N.7 closing pins in steel INOX HRC 35-41 consenting 7.000.000 different codes with more than 4.450.000 key differs available.
Every locks can be programmed an infinite times with more than 4.450.000 different keys.
- N.1 closing bar in steel INOX HRC 60-56 with anti-picking function
- N.1 change bar in steel INOX HRC 35-41 with 7 closing elements (lever) working with 7 closing pins
- N.2 plugs in steel INOX 58-60HRC with anti-drill function.

The high security re-programmable locks RS1 are designed to resist the following attacks:

- Forcing with metal tools in the keyway
- Optical and mechanic reading of the internal mechanism
- Opening with "soft" methods (key impression, etc)
- Hand and electric picking
- Key bumping
- Cylinder extraction

There are many different models of the RS1 high security re-programmable locks. They are produced in various diameters and lengths and therefore compatible with all the vending and gaming machines.

Keypacks can be purchased separately, these include a gold programme key and silver user keys. The user keys are available in various quantities, for example 3, 5, 10, 20 etc. Every keypack has a personal code assigned to the customer.

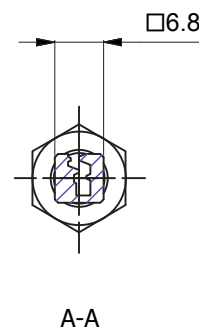
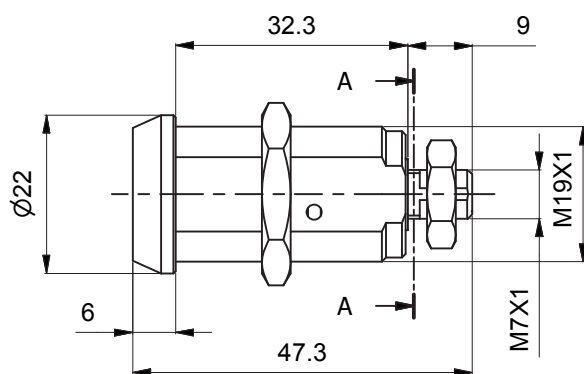
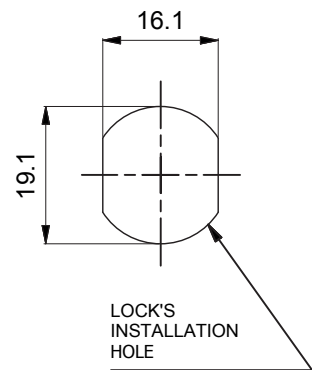
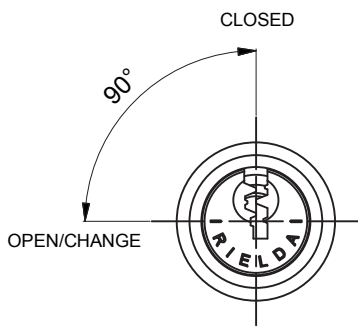
Copies of keys are available, however these can only be cut by Rielda.

All keys are guaranteed for life.

Cam locks Series 400-500 Model 407 RS1

Characteristics:

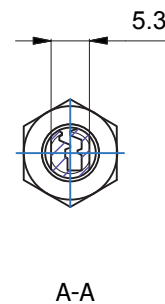
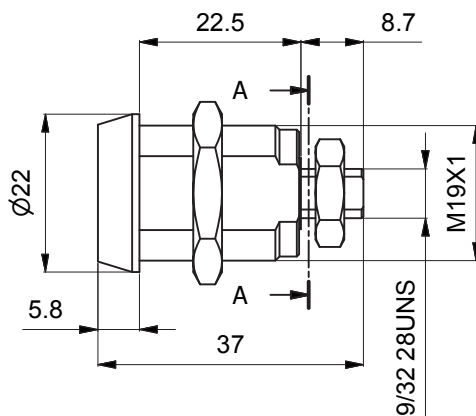
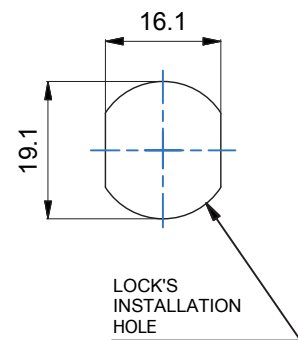
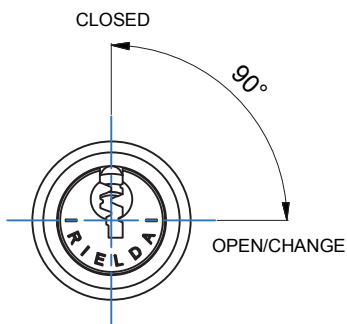
- mechanical re-programmable lock
- made in brass
- external finish in nickel
- rotation 90° counter-clockwise
- resistant to opening with method "bumping"
- resistant to opening with picks - "picking"
- resistant to drilling



Cam locks Series 400-500 Model 409 RS1

Characteristics:

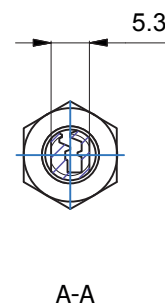
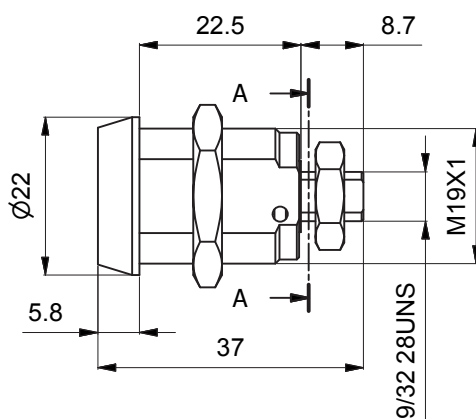
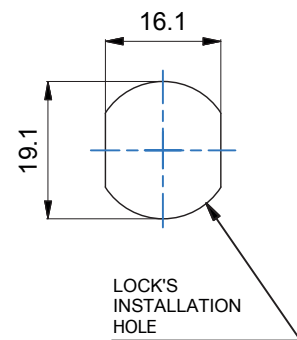
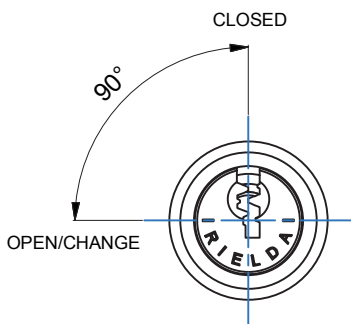
- mechanical re-programmable lock
- made in brass
- external finish in nickel
- rotation 90° clockwise
- resistant to opening with method "bumping"
- resistant to opening with picks - "picking"
- resistant to drilling



Cam locks Series 400-500 Model 410 RS1

Characteristics:

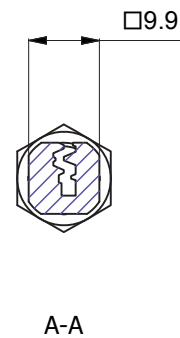
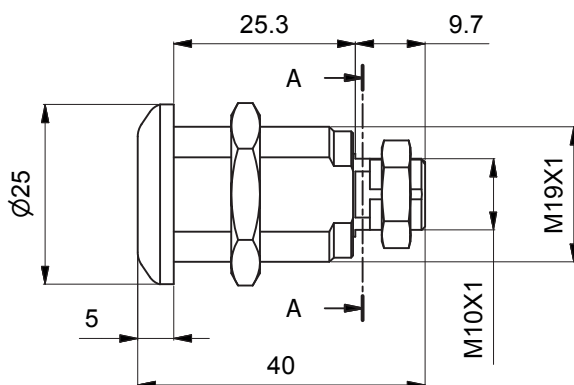
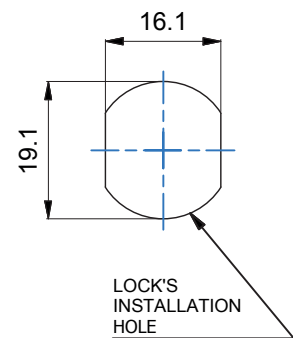
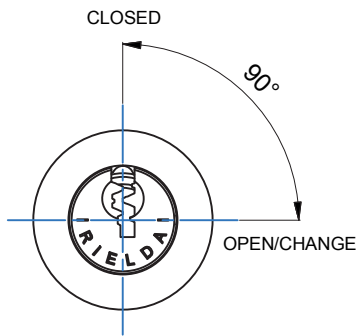
- mechanical re-programmable lock
- made in brass
- external finish in nickel
- rotation 90° counter-clockwise
- resistant to opening with method "bumping"
- resistant to opening with picks - "picking"
- resistant to drilling



Cam locks Series 400-500 Model 414 RS1

Characteristics:

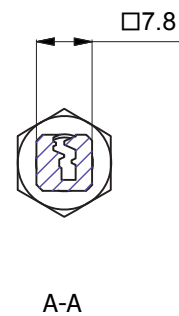
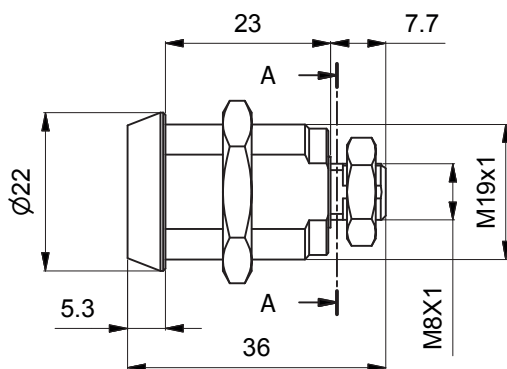
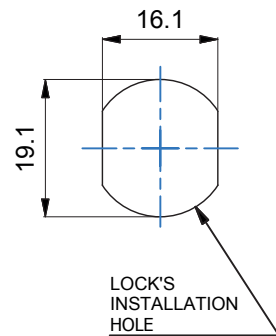
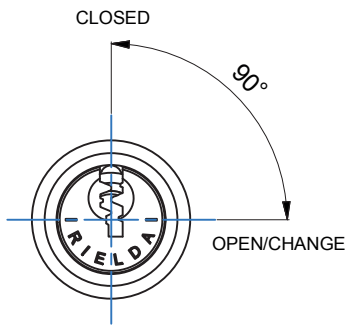
- mechanical re-programmable lock
- made in brass
- external finish in nickel
- rotation 90° clockwise
- resistant to opening with method "bumping"
- resistant to opening with picks - "picking"
- resistant to drilling



Cam locks Series 400-500 Model 418 RS1

Characteristics:

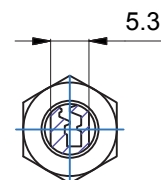
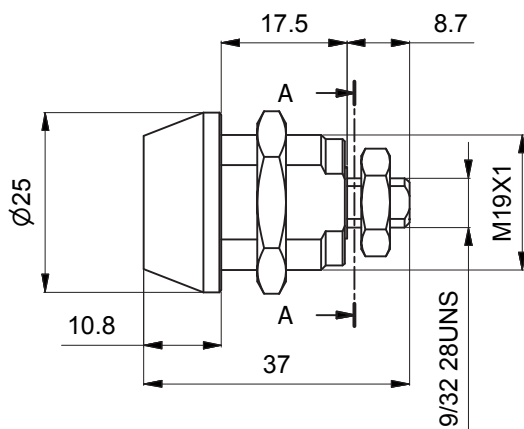
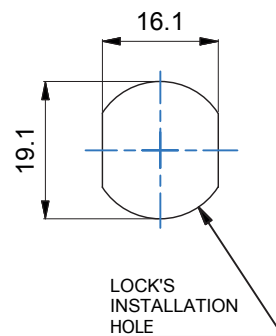
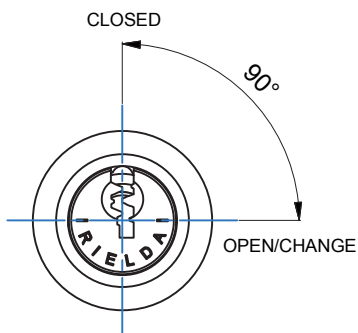
- mechanical re-programmable lock
- made in brass
- external finish in nickel
- rotation 90° clockwise
- resistant to opening with method "bumping"
- resistant to opening with picks - "picking"
- resistant to drilling



Cam locks Series 400-500 Model 425 RS1

Characteristics:

- mechanical re-programmable lock
- made in brass
- external finish in nickel
- rotation 90° clockwise
- resistant to opening with method "bumping"
- resistant to opening with picks - "picking"
- resistant to drilling

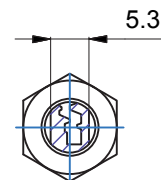
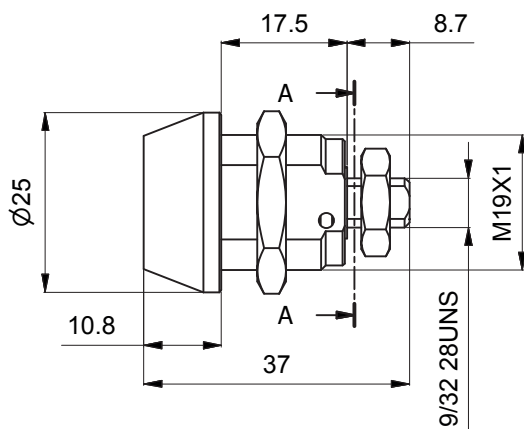
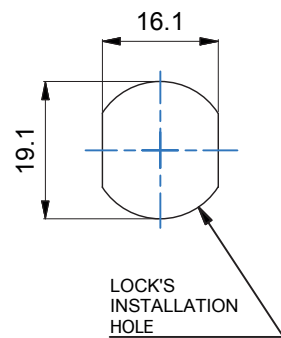
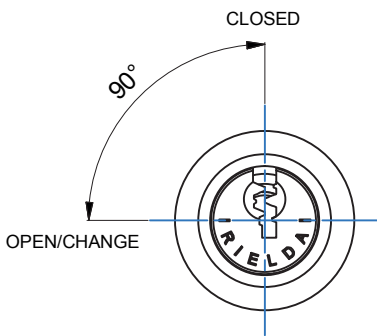


A-A

Cam locks Series 400-500 Model 426 RS1

Characteristics:

- mechanical re-programmable lock
- made in brass
- external finish in nickel
- rotation 90° counter-clockwise
- resistant to opening with method "bumping"
- resistant to opening with picks - "picking"
- resistant to drilling

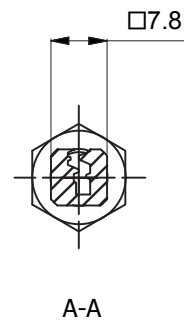
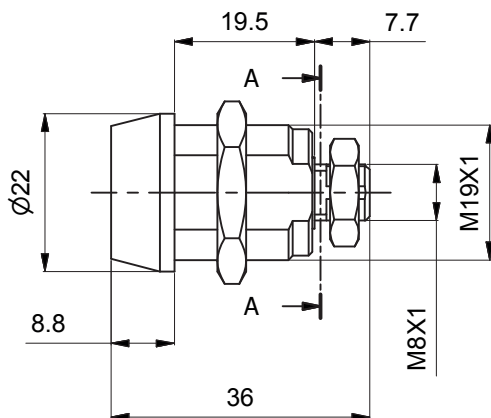
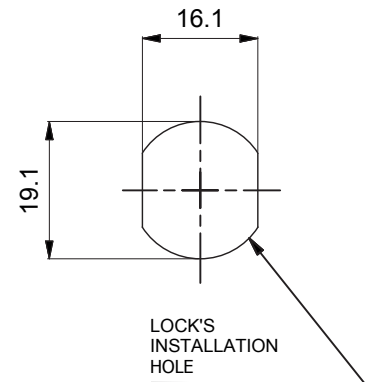
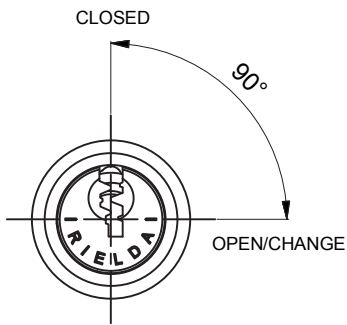


A-A

Cam locks Series 400-500 Model 435 RS1

Characteristics:

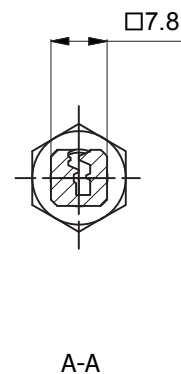
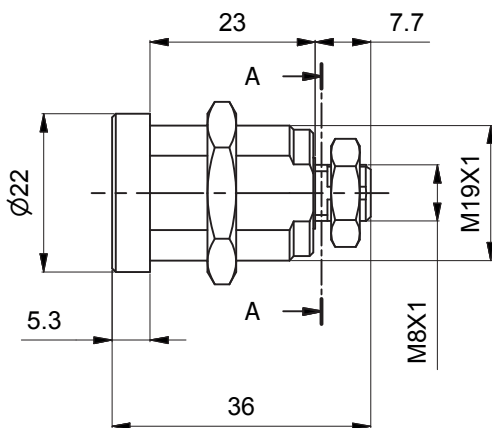
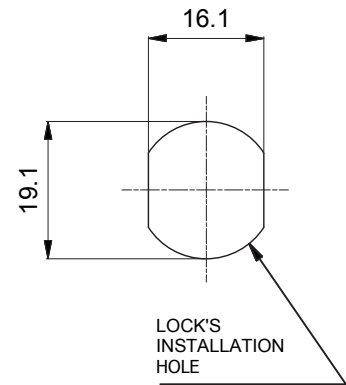
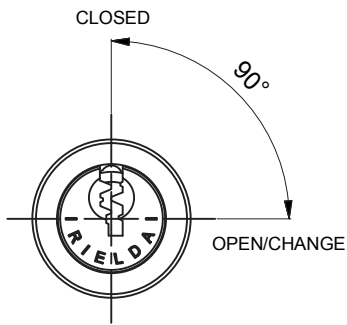
- mechanical re-programmable lock
- made in brass
- external finish in nickel
- rotation 90° clockwise
- resistant to opening with method "bumping"
- resistant to opening with picks - "picking"
- resistant to drilling



Cam locks Series 400-500 Model 503 RS1

Characteristics:

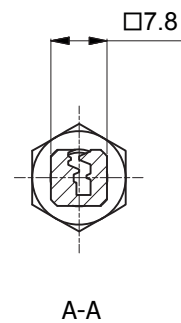
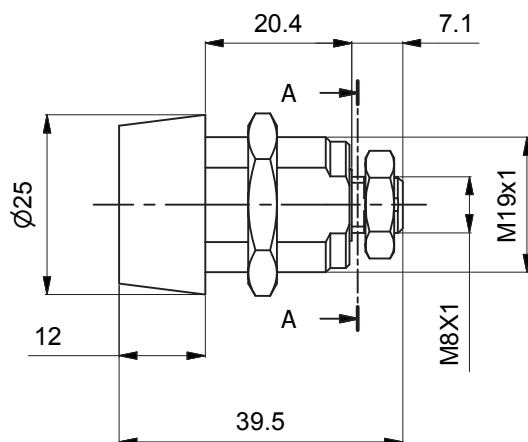
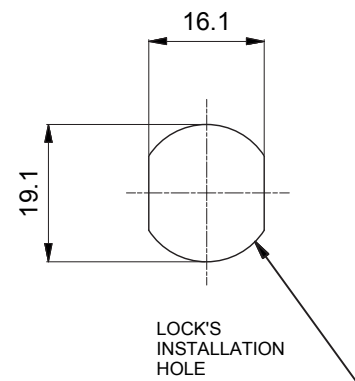
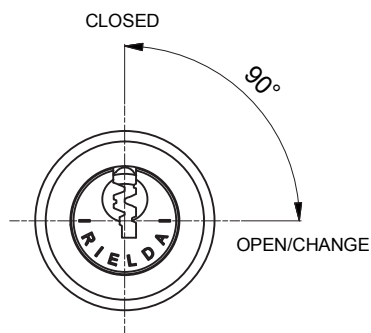
- mechanical re-programmable lock
- made in brass
- external finish in nickel
- rotation 90° clockwise
- resistant to opening with method "bumping"
- resistant to opening with picks - "picking"
- resistant to drilling



Cam locks Series 400-500 Model 508 RS1

Characteristics:

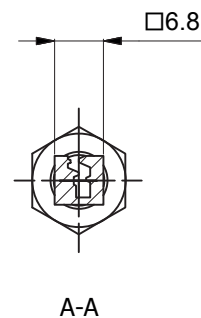
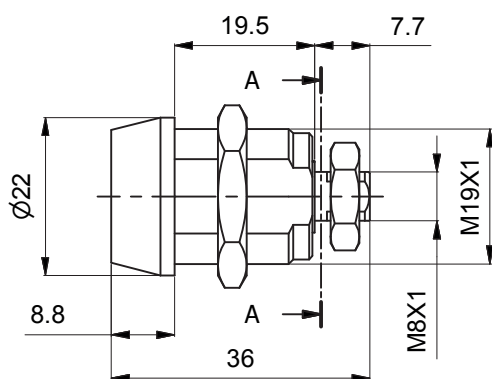
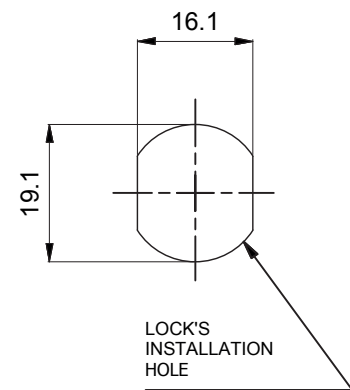
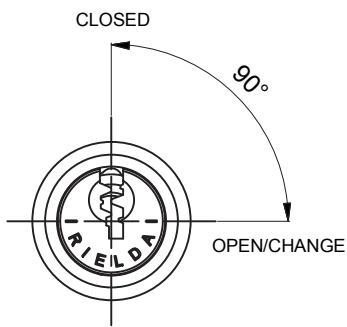
- mechanical re-programmable lock
- made in brass
- external finish in nickel
- rotation 90° clockwise
- resistant to opening with method "bumping"
- resistant to opening with picks - "picking"
- resistant to drilling



Cam locks Series 400-500 Model 510 RS1

Characteristics:

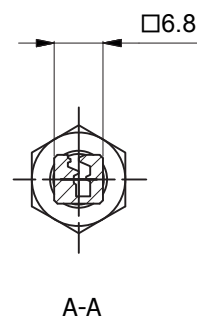
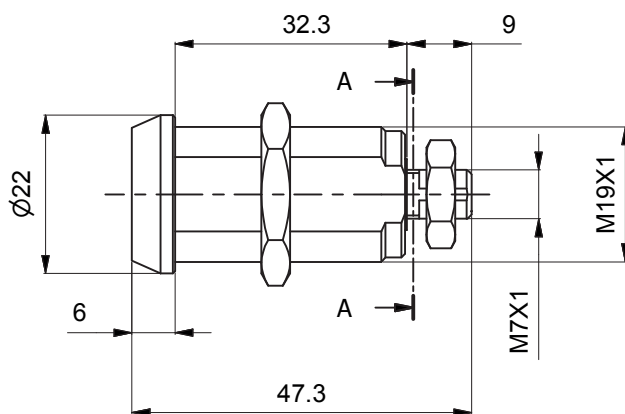
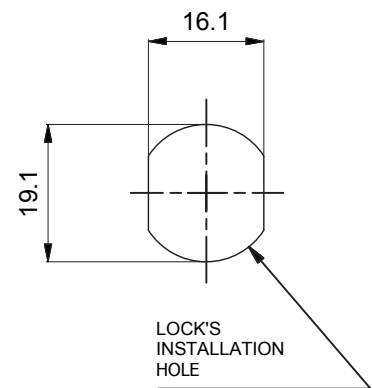
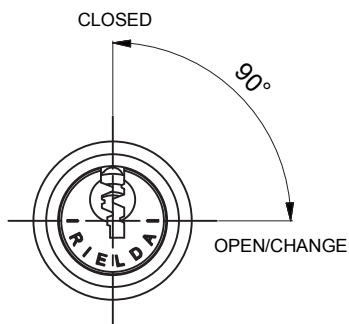
- mechanical re-programmable lock
- made in brass
- external finish in nickel
- rotation 90° clockwise
- resistant to opening with method "bumping"
- resistant to opening with picks- "picking"
- resistant to drilling



Cam locks Series 400-500 Model 511 RS1

Characteristics:

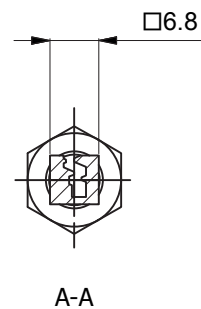
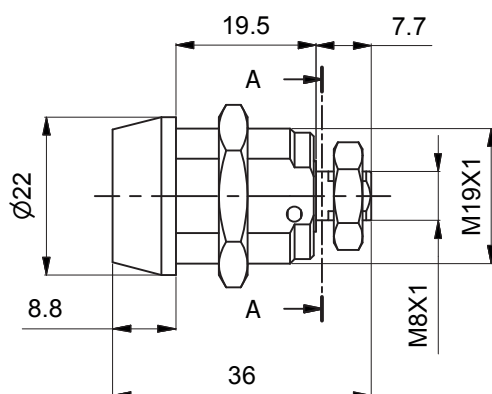
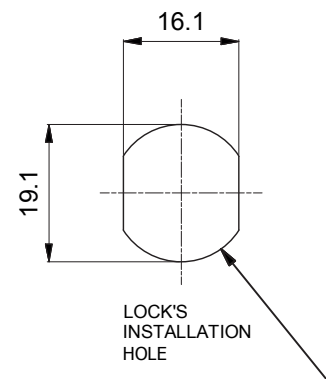
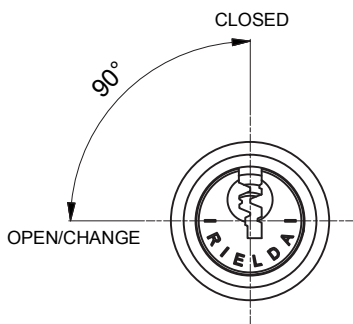
- mechanical re programmable lock
- made in brass
- external finish in nickel
- rotation 90° clockwise
- resistant to opening with method "bumping"
- resistant to opening with picks - "picking"
- resistant to drilling



Cam locks Series 400-500 Model 515 RS1

Characteristics:

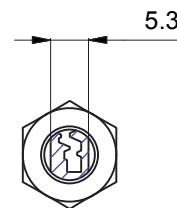
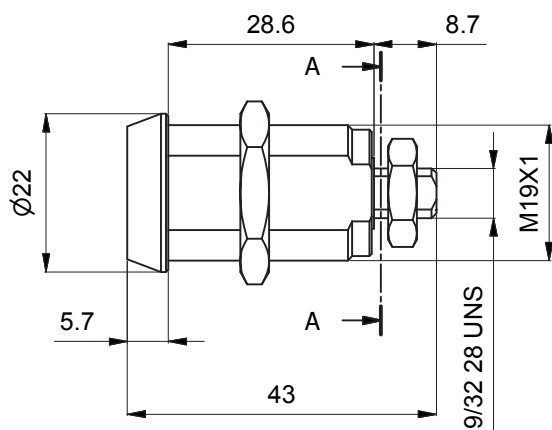
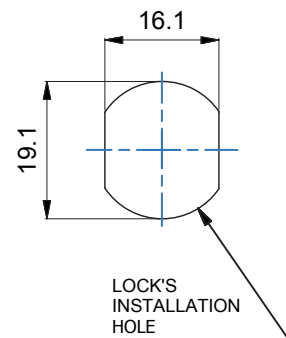
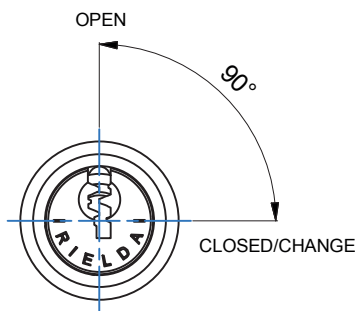
- mechanical re-programmable lock
- made in brass
- external finish in nickel
- rotation 90° counter-clockwise
- resistant to opening with method "bumping"
- resistant to opening with picks - "picking"
- resistant to drilling



Cam locks Series 400-500 Model 519 RS1

Characteristics:

- mechanical re-programmable lock
- made in brass
- external finish in nickel
- rotation 90° clockwise
- resistant to opening with method "bumping"
- resistant to opening with picks - "picking"
- resistant to drilling

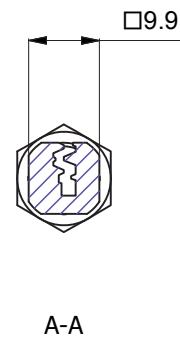
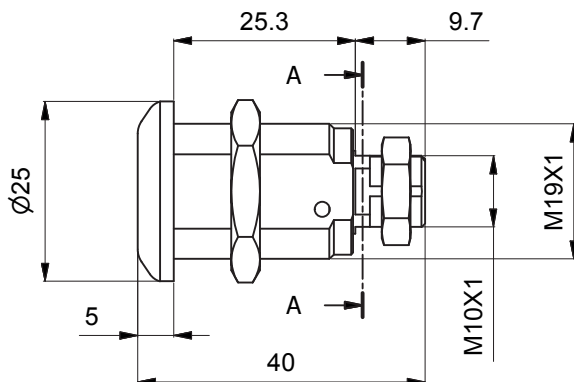
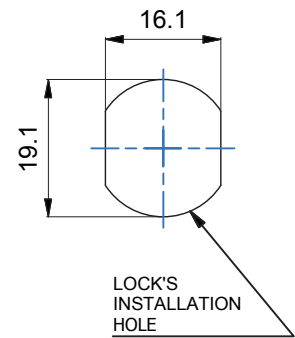
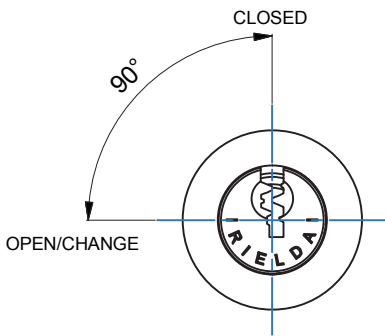


A-A

Cam locks Series 400-500 Model 520 RS1

Characteristics:

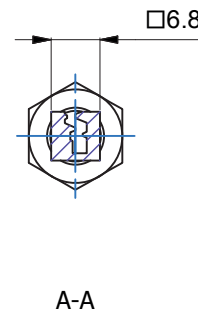
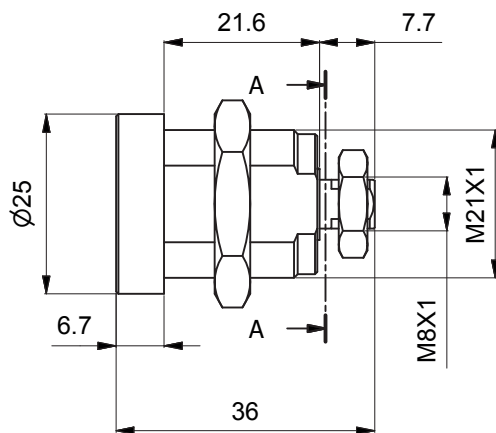
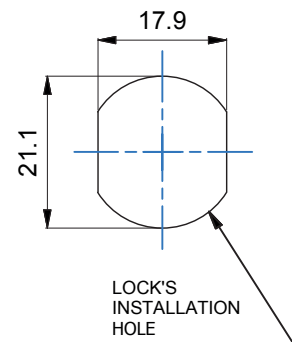
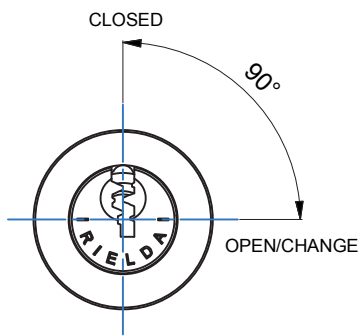
- mechanical re-programmable lock
- made in brass
- external finish in nickel
- rotation 90° counter-clockwise
- resistant to opening with method "bumping"
- resistant to opening with picks - "picking"
- resistant to drilling



Cam locks Series 400-500 Model 521 RS1

Characteristics:

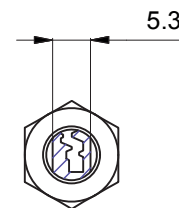
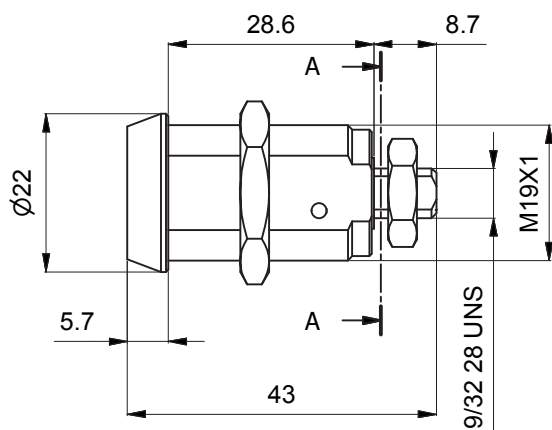
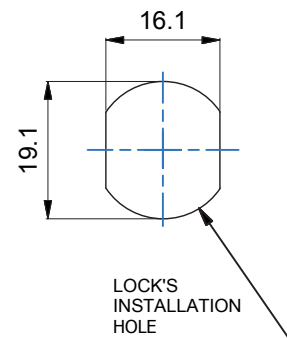
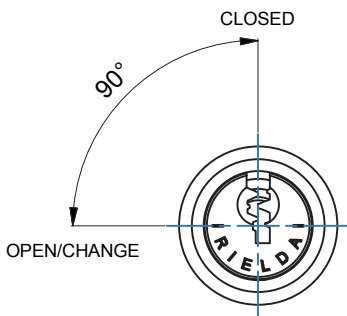
- mechanical re-programmable lock
- made in brass
- external finish in nickel
- rotation 90° clockwise
- resistant to opening with method "bumping"
- resistant to opening with picks- "picking"
- resistant to drilling



Cam locks Series 400-500 Model 531 RS1

Characteristics:

- mechanical re-programmable lock
- made in brass
- external finish in nickel
- rotation 90° counter-clockwise
- resistant to opening with method "bumping"
- resistant to opening with picks - "picking"
- resistant to drilling

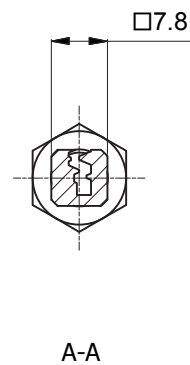
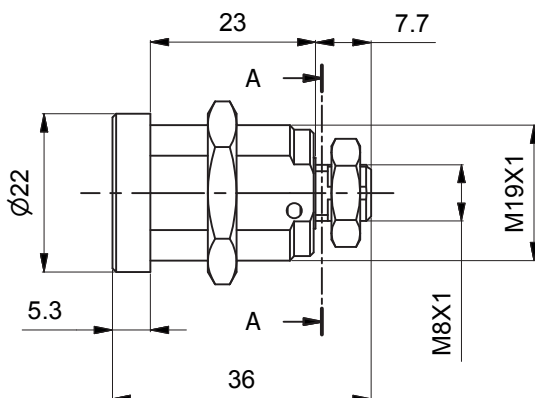
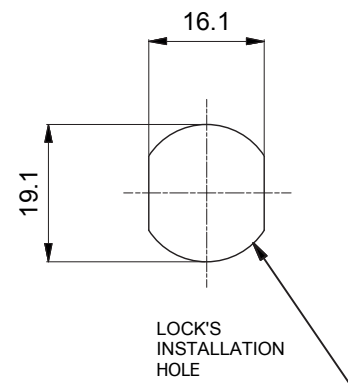
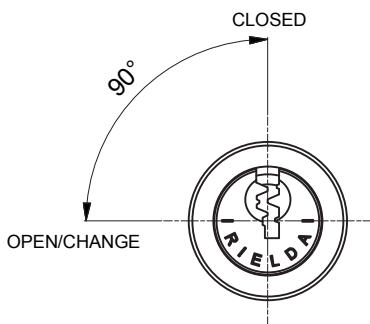


A-A

Cam locks Series 400-500 Model 536 RS1

Characteristics:

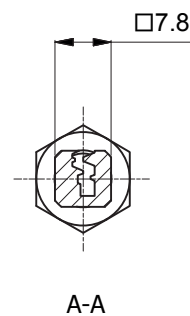
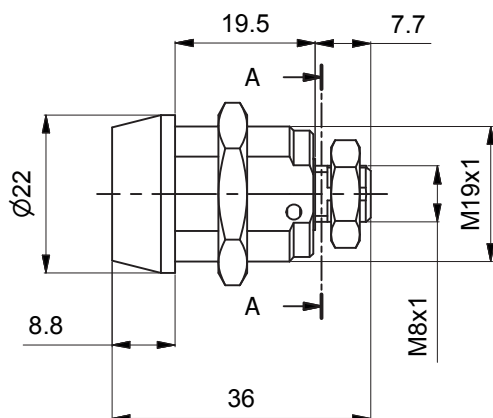
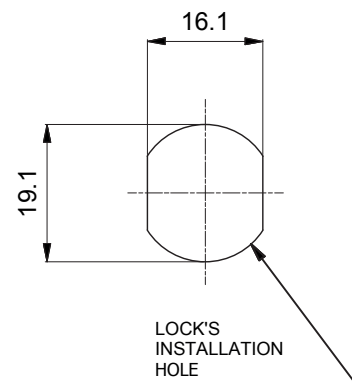
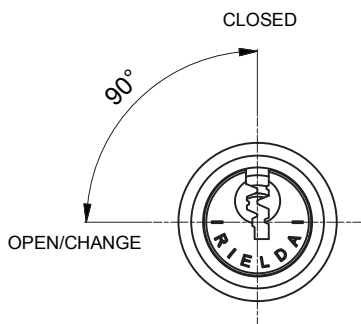
- mechanical re-programmable lock
- made in brass
- external finish in nickel
- rotation 90° counter-clockwise
- resistant to opening with method "bumping"
- resistant to opening with picks - "picking"
- resistant to drilling



Cam locks Series 400-500 Model 538 RS1

Characteristics:

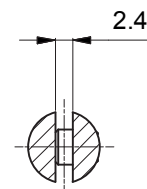
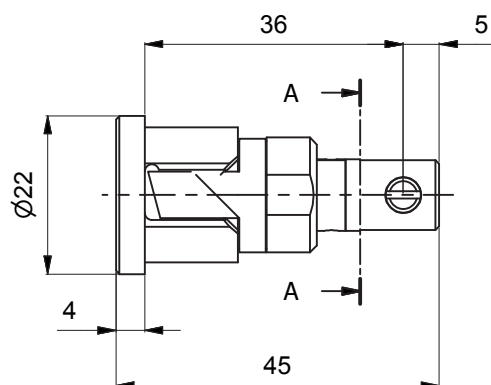
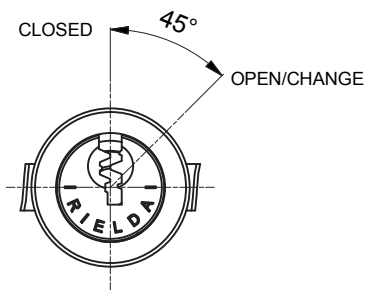
- mechanical re-programmable lock
- made in brass
- external finish in nickel
- rotation 90° counter-clockwise
- resistant to opening with method "bumping"
- resistant to opening with picks - "picking"
- resistant to drilling



Cam locks Series 400-500 Model 551 RS1

Characteristics:

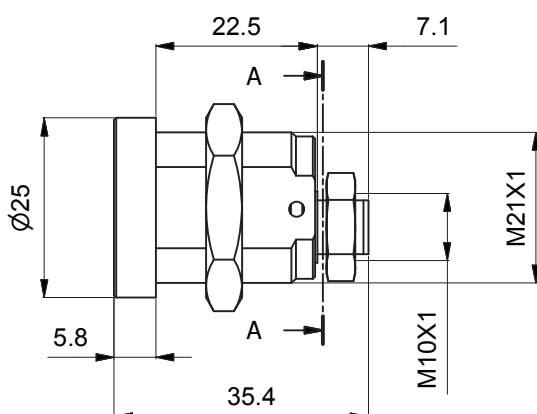
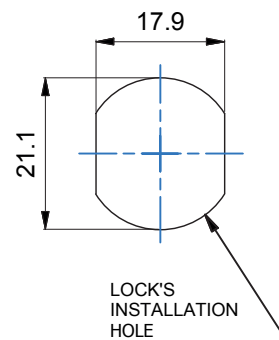
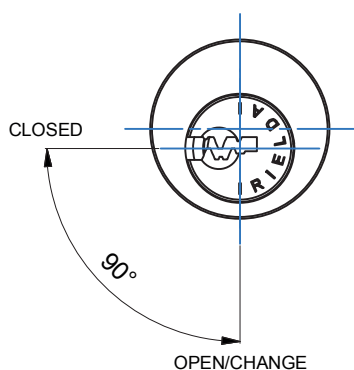
- mechanical re-programmable lock
- made in brass
- external finish in nickel
- rotation 45° clockwise
- resistant to opening with method "bumping"
- resistant to opening with picks - "picking"
- resistant to drilling



Cam locks Series 400-500 Model 561D RS1

Characteristics:

- mechanical re-programmable lock
- made in brass
- external finish in nickel
- rotation 90° counter-clockwise
- resistant to opening with method "bumping"
- resistant to opening with picks - "picking"
- resistant to drilling

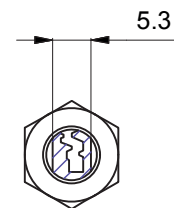
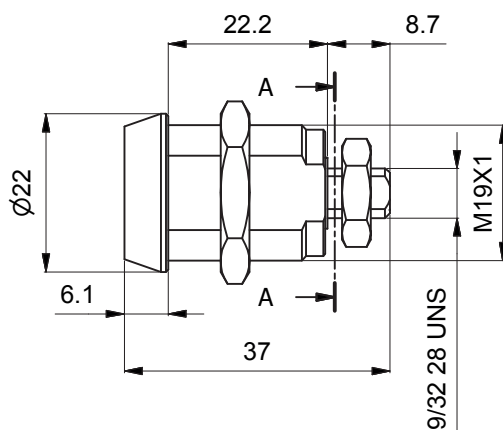
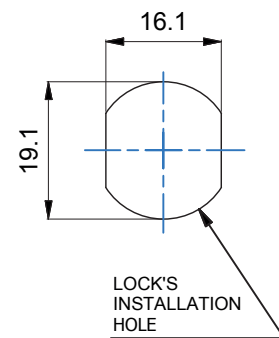
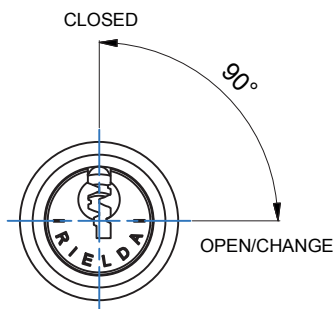


A-A

Cam locks Series 400-500 Model 567 RS1

Characteristics:

- mechanical re-programmable lock
- made in brass
- external finish in nickel
- rotation 90° clockwise
- resistant to opening with method "bumping"
- resistant to opening with picks - "picking"
- resistant to drilling

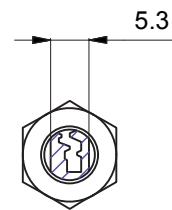
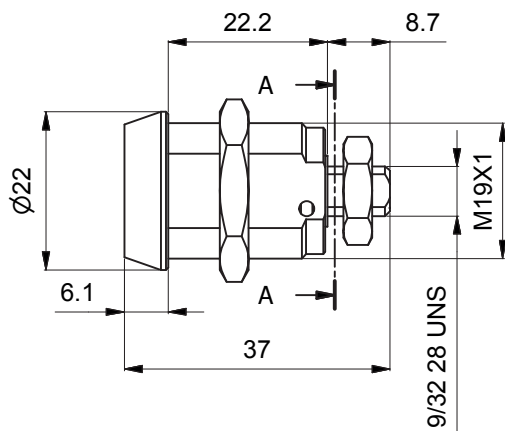
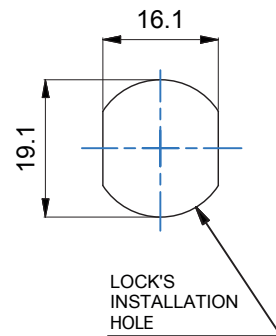
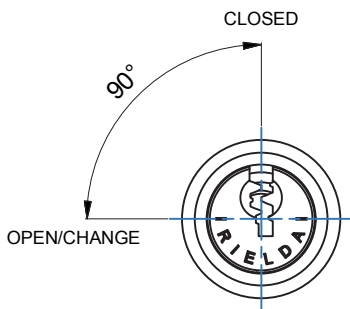


A-A

Cam locks Series 400-500 Model 568 RS1

Characteristics:

- mechanical re-programmable lock
- made in brass
- external finish in nickel
- rotation 90° counter-clockwise
- resistant to opening with method "bumping"
- resistant to opening with picks - "picking"
- resistant to drilling

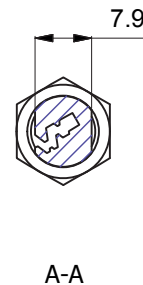
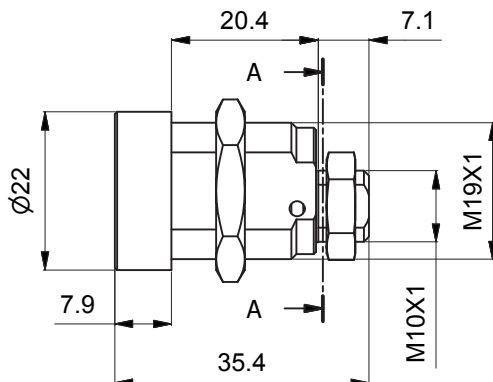
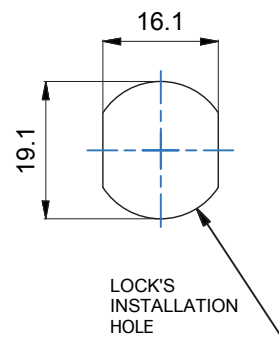
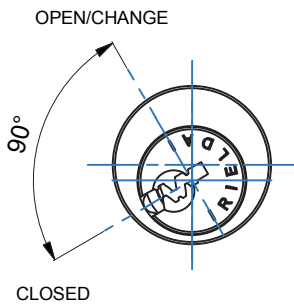


A-A

Cam locks Series 400-500 Model 571D RS1

Characteristics:

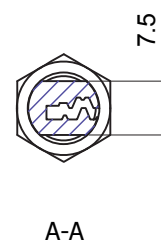
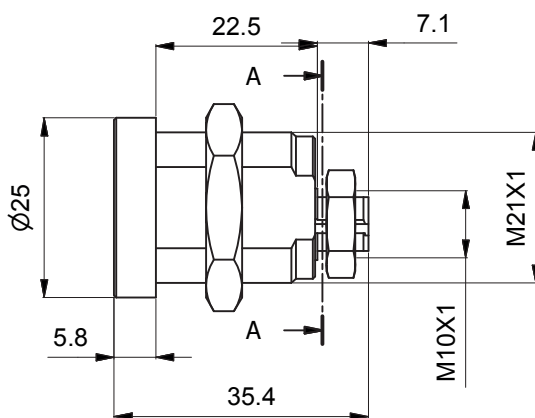
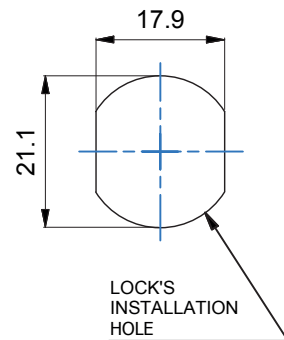
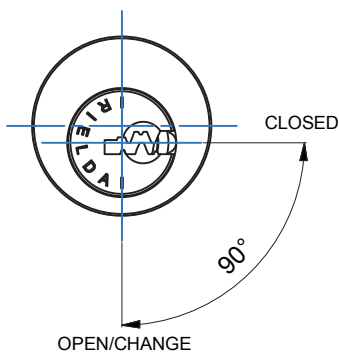
- mechanical re-programmable lock
- made in brass
- external finish in nickel
- rotation 90° clockwise
- resistant to opening with method "bumping"
- resistant to opening with picks - "picking"
- resistant to drilling



Cam locks Series 400-500 Model 573D RS1

Characteristics:

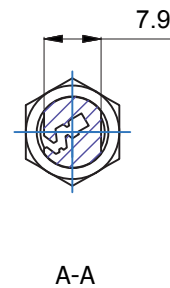
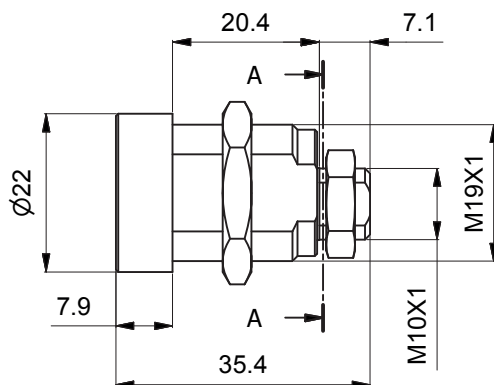
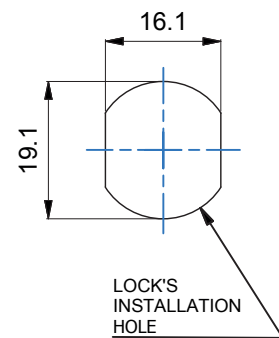
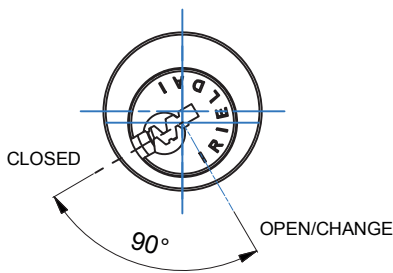
- mechanical re-programmable lock
- made in brass
- external finish in nickel
- rotation 90° clockwise
- resistant to opening with method "bumping"
- resistant to opening with picks - "picking"
- resistant to drilling



Cam locks Series 400-500 Model 576D RS1

Characteristics:

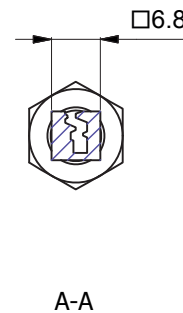
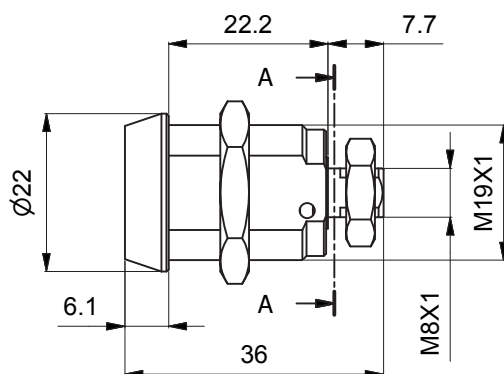
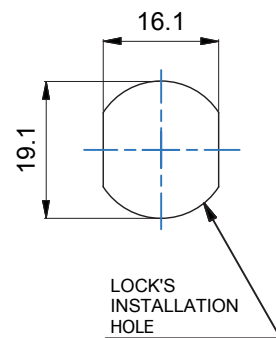
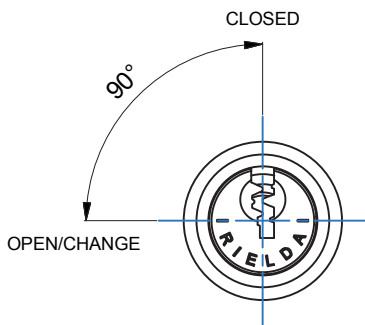
- mechanical re-programmable lock
- made in brass
- external finish in nickel
- rotation 90° counter-clockwise
- resistant to opening with method "bumping"
- resistant to opening with picks- "picking"
- resistant to drilling



Cam locks Series 400-500 Model 592 RS1

Characteristics:

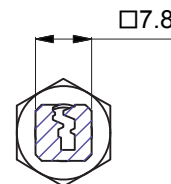
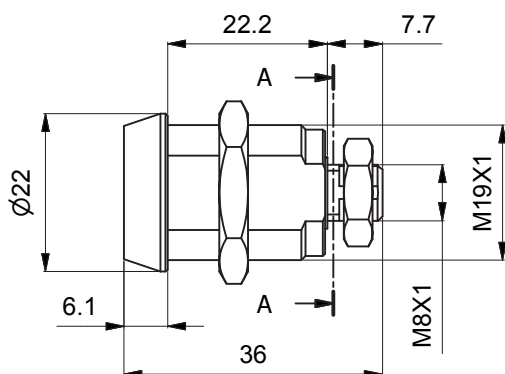
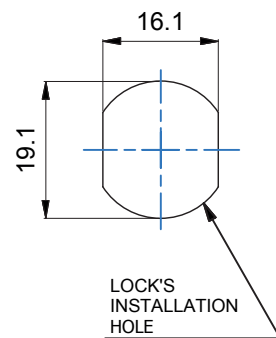
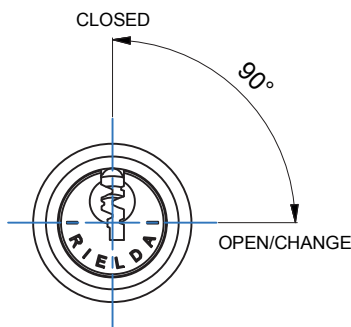
- mechanical re-programmable lock
- made in brass
- external finish in nickel
- rotation 90° counter-clockwise
- resistant to opening with method "bumping"
- resistant to opening with picks - "picking"
- resistant to drilling



Cam locks Series 400-500 Model 593 RS1

Characteristics:

- mechanical re-programmable lock
- made in brass
- external finish in nickel
- rotation 90° clockwise
- resistant to opening with method "bumping"
- resistant to opening with picks - "picking"
- resistant to drilling

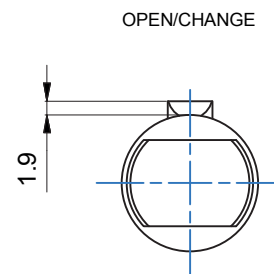
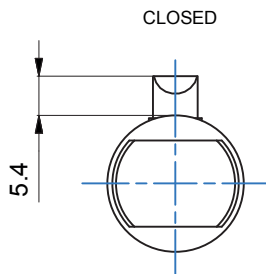
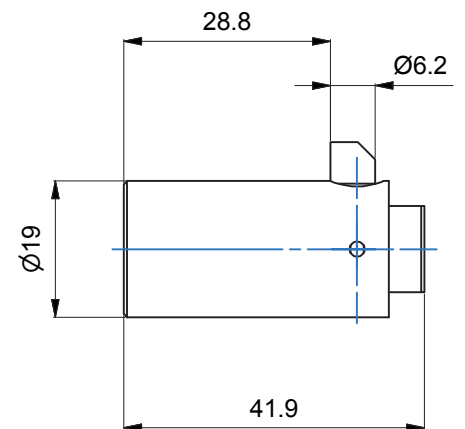
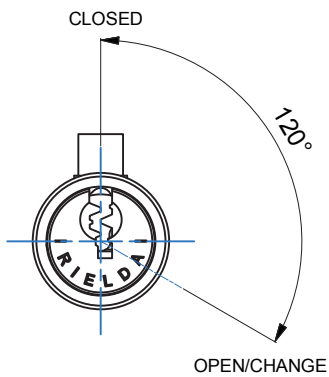


A-A

T-handle locks Series 4000 RS1 Model 4000

Characteristics:

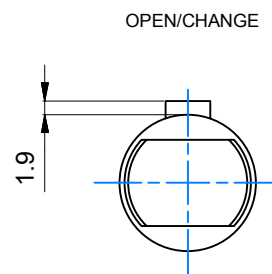
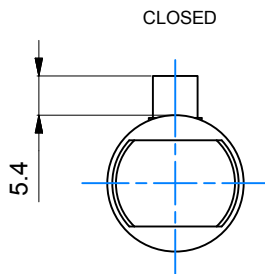
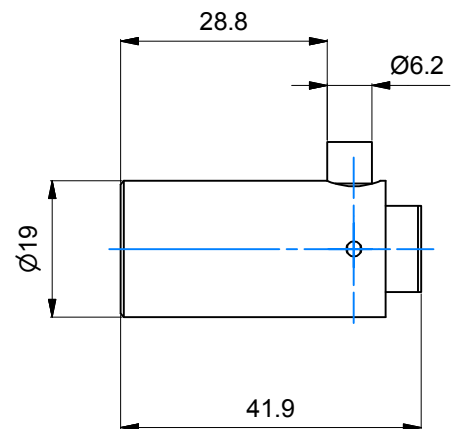
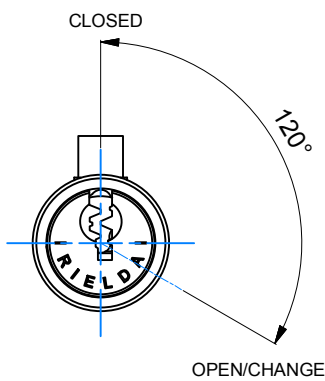
- mechanical re-programmable security cylinder
- made in brass
- external finish in nickel
- spring closure latch
- closure latch in brass
- resistant to opening with method "bumping"
- resistant to opening with picks - "picking"
- resistant to drilling



T-handle locks Series 4000 RS1 Model 4003

Characteristics:

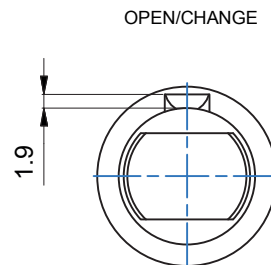
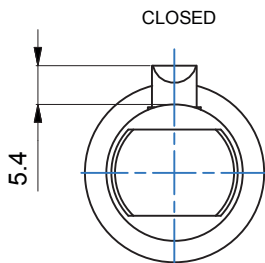
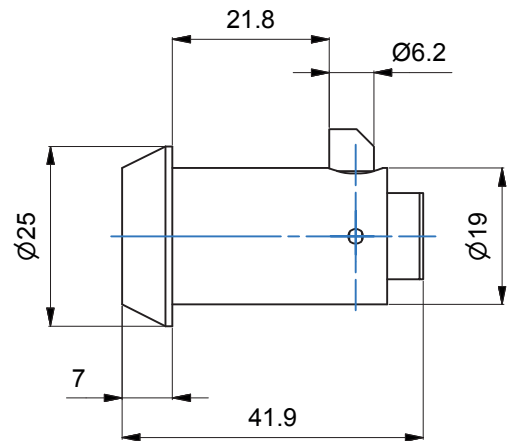
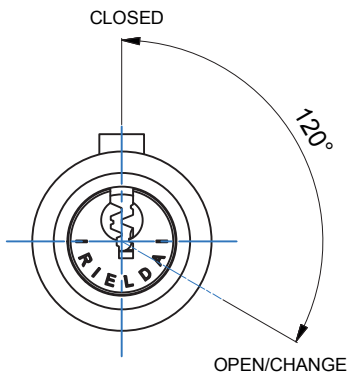
- mechanical re-programmable security cylinder
- made in brass
- external finish in nickel
- fixed closure latch
- closure latch in brass
- resistant to opening with method "bumping"
- resistant to opening with picks - "picking"
- resistant to drilling



T-handle locks Series 4000 RS1 Model 4010

Characteristics:

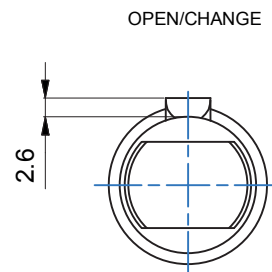
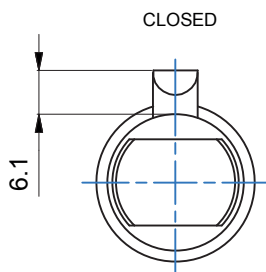
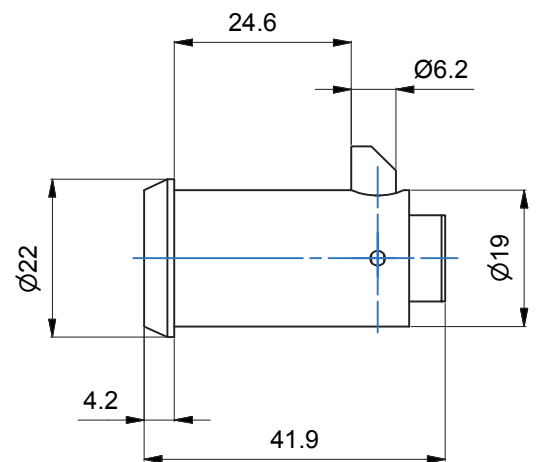
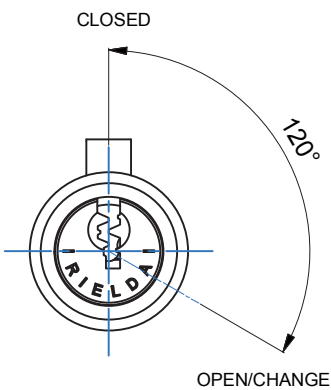
- mechanical re-programmable security cylinder
- made in brass
- external finish in nickel
- spring closure latch
- closure latch in brass
- resistant to opening with method "bumping"
- resistant to opening with picks - "picking"
- resistant to drilling



T-handle locks Series 4000 RS1 Model 4011

Characteristics:

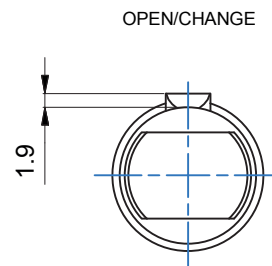
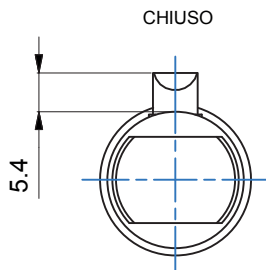
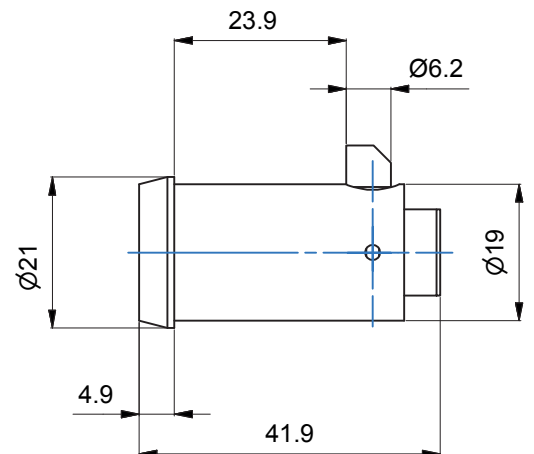
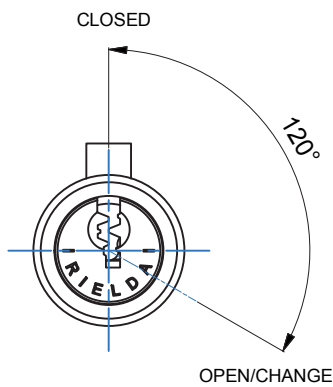
- mechanical re-programmable security cylinder
- made in brass
- external finish in nickel
- spring closure latch
- closure latch in brass
- resistant to opening with method "bumping"
- resistant to opening with picks - "picking"
- resistant to drilling



T-handle locks Series 4000 RS1 Model 4012

Characteristics:

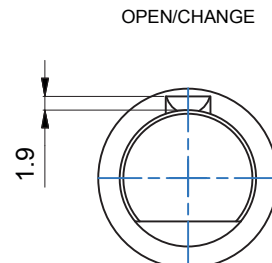
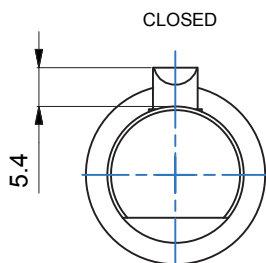
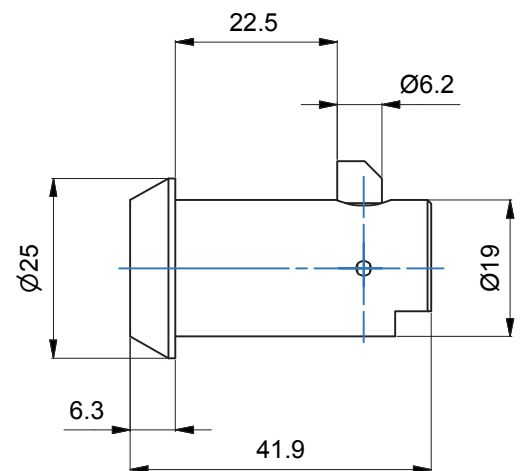
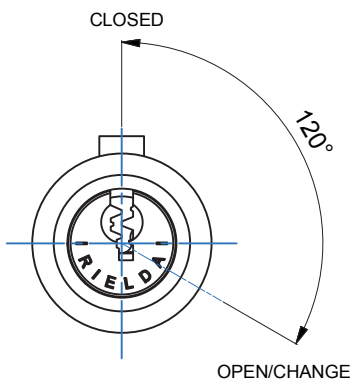
- mechanical re-programmable security cylinder
- made in brass
- external finish in nickel
- spring closure latch
- closure latch in brass
- resistant to opening with method "bumping"
- resistant to opening with picks - "picking"
- resistant to drilling



T-handle locks Series 4000 RS1 Model 4013

Characteristics:

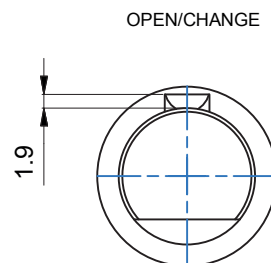
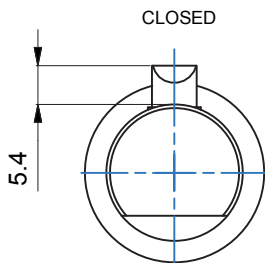
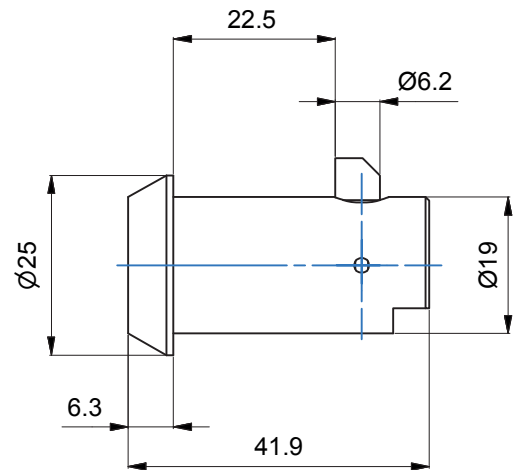
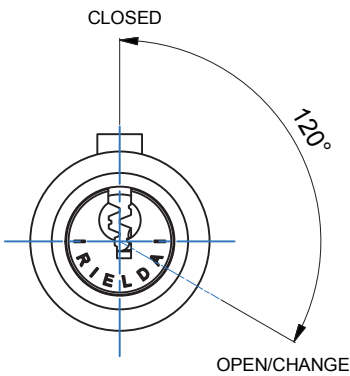
- mechanical re-programmable security cylinder
- made in brass
- external finish in nickel
- spring closure latch
- closure latch in brass
- resistant to opening with method "bumping"
- resistant to opening with picks - "picking"
- resistant to drilling



T-handle locks Series 4000 RS1 Model 4014

Characteristics:

- mechanical re-programmable security cylinder
- made in brass
- external finish in nickel
- spring closure latch
- closure latch in brass
- resistant to opening with method "bumping"
- resistant to opening with picks - "picking"
- resistant to drilling



T-handle Model 002

Characteristics:

- movement in drawn out position is 360°
- made in zama
- external finish in nickel
- internal spring of movement in stainless steel
- complete with screws

