

RIELDA
Serrature

RS3



made in Italy

What's it for?

Benefits for the end customer

Locks no longer need to be replaced when you lose a key or have one stolen or you fear someone may have made a copy. In these cases, simply re-program the lock with a new key, preventing the previous key from working.

An endless number of locks can be managed, using a single key or create groups of locks working with the same key, according to your needs.

Benefits for door manufacturers and cylinder retailers

Considerable savings with the possibility of creating KA systems in just a few seconds and simple management of the assembly lines with a single key.

How secure is it?

Keyhole

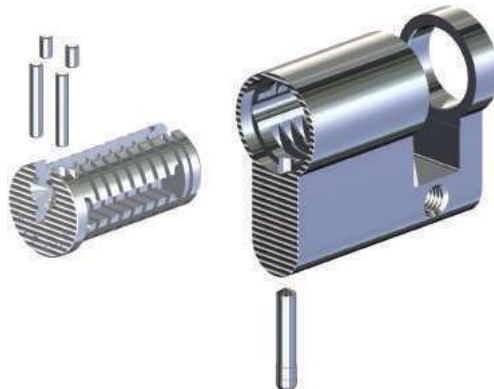
The new keyhole design guarantees security against forcing with hard metal tools and optical and mechanical reading of the internal systems.

RS3 was also designed to resist opening attempts with soft methods (keys, springs, imprints, vibrators), pick-locks and the “bumping” method.



Anti-perforation

The entire RS3 line also has five anti-perforation steel plugs with 58-60 HRC hardness which guarantee high strength against perforation with high speed drill bits and non-extraction of the rotor with specific tools in the keyhole.



Ergonomics, design and strength of the keys

We chose a completely metal key (brass) with a 3 mm thickness and innovative design.



Key protection

The keys are protected by patent and it is illegal to make unauthorised copies.

The copies of the keys are only cut by our authorised duplication centres presenting the registration card.



To get copies of keys please visit our website:
www.rieldaserrature.com in section commercial network/
rielda point
You will find a list of our authorized centres

REGISTRATION CARD

It must obligatorily be submitted to request key duplicates

RS3

Cutting code	<input type="text"/>
key code	<input type="text"/>

UNI EN1303:2005

The RS3 cylinders have obtained the maximum values for each test class. The Istituto Giordano with an excerpt of test report number No.299949 classified the cylinders RS3 with the coding system outlined by the standard 8 digits, resulting in:

1 6 0 0 C 6 2

General characteristics

Compliant with UNI EN 1303:2005

Extremely high number of combinations

Duplication of key protected

Key protected by internationally filed patent

Brass key

Technical characteristics

Rotor in nickel plated brass

Stator in nickel plated brass

N. 7 brass closure pins

Re-programming of each cylinder is infinite with 62,500 different keys

N. 1 steel closure bar with 60-65 HRC hardness with anti-picklock function

N. 1 change bar in stainless steel HRC 35-41 with 7 closure elements (levers) working with brass pins

N. 5 perforation proof steel pins with 58-60 HRC hardness

Resistance and couplings

Forcing with hard metal tools in the key hole

Optical and mechanical reading of the inner mechanisms

Opening with soft method (keys, springs, imprints, vibrators, etc.)

Resistance to picklock opening

Resistance to opening using the bumping method

Extraction of rotor with the specific tools in the key hole

Perforation with high speed drill bits

Compatibility

RS3 re-programmable high security locks are produced in many models with various diameters and lengths

Keys

The cylinders are sold with or without the keys kit. The keys kit includes a programming key (gold) and various use keys

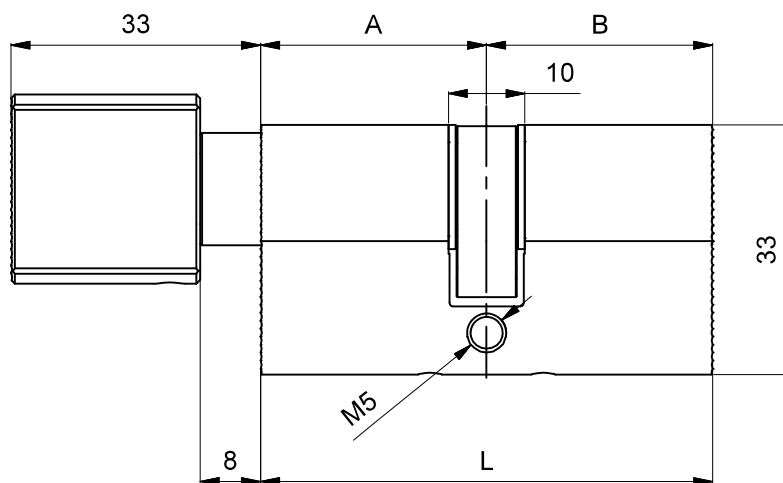
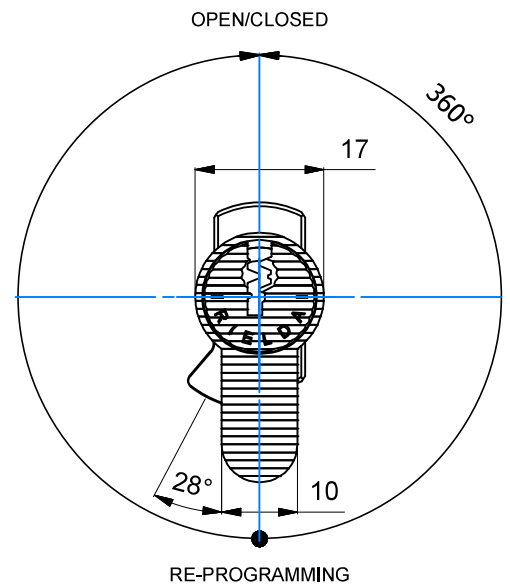
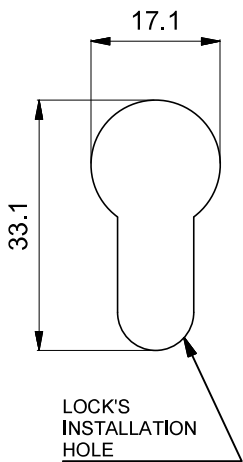
Each keys kit has a registration card.

Duplication of the keys can be carried out by the authorised centres on presentation of the registration card

European profile cylinders Series 1100 RS3

Characteristics:

- mechanical re-programmable security cylinder
- locking knob
- made in brass
- external finish on request (nickel/brass)
- cam tilt at 28° for tear proof function
- re-programming at 180°
- resistant to opening with method "bumping"
- resistant to opening with picks - "picking"
- resistant to drilling

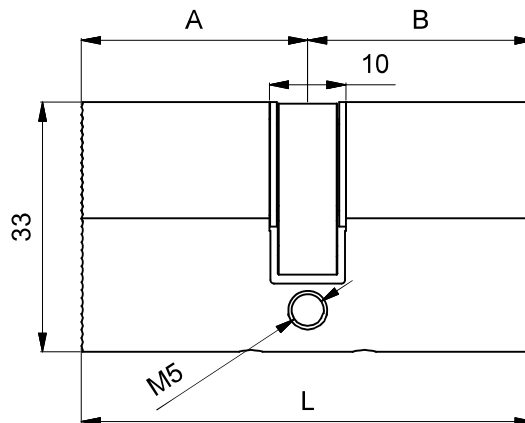
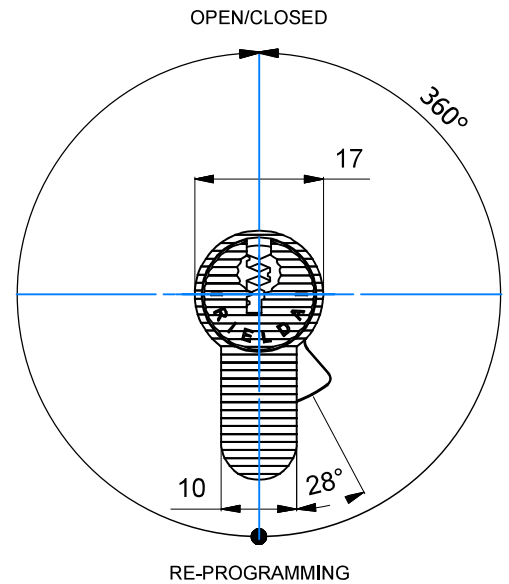
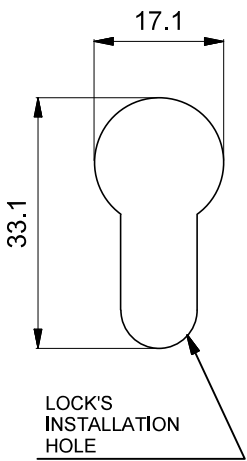


Available models in the table on next page

European profile cylinders Series 1200 RS3

Characteristics:

- mechanical re-programmable security cylinder
- made in brass
- external finish on request (nickel/brass)
- cam tilt at 28° for tear proof function
- re-programming at 180°
- resistant to opening with method "bumping"
- resistant to opening with picks - "picking"
- resistant to drilling

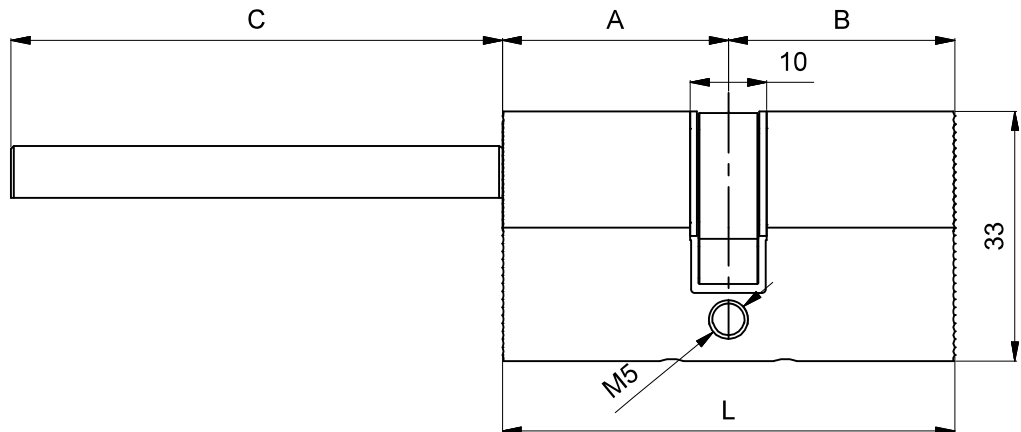
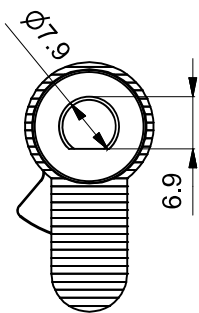
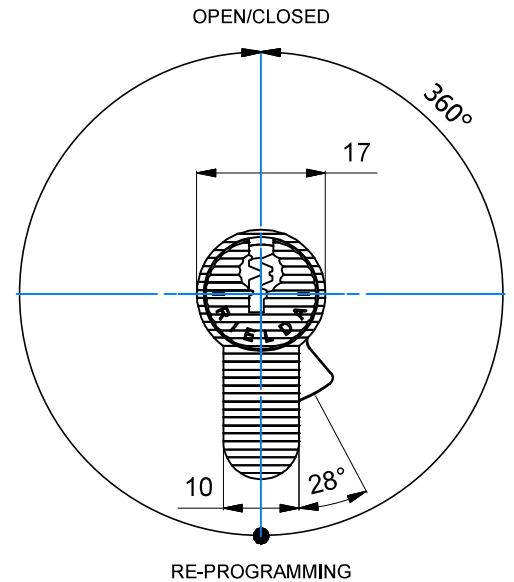
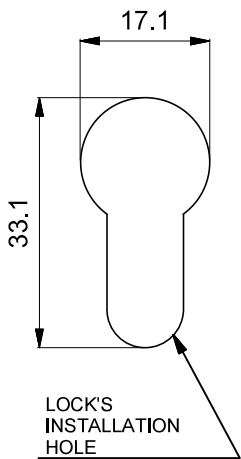


Available models in the table on next page

European profile cylinders Series 1300 RS3

Characteristics:

- mechanical re-programmable security cylinder with axis shortenable
- made in brass
- external finish on request (nickel/brass)
- cam tilt at 28° for tear proof function
- re-programming at 180°
- resistant to opening with method "bumping"
- resistant to opening with picks - "picking"
- resistant to drilling

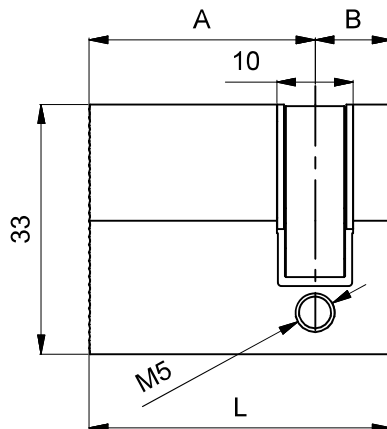
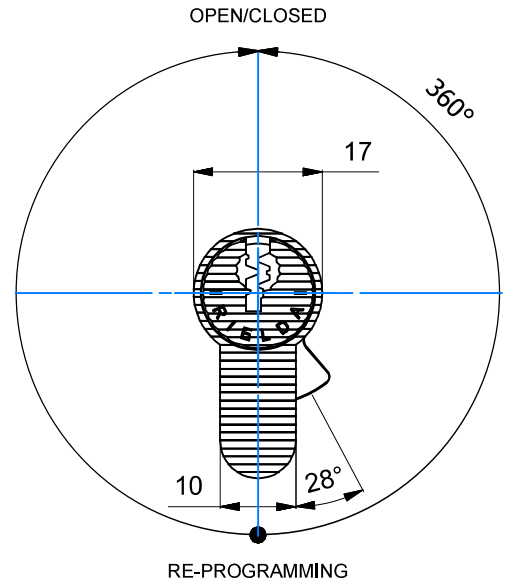
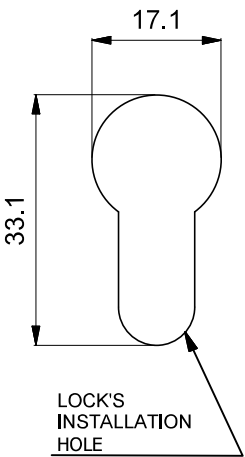


Available models in the table on next page

European profile cylinders Series 1400 RS3

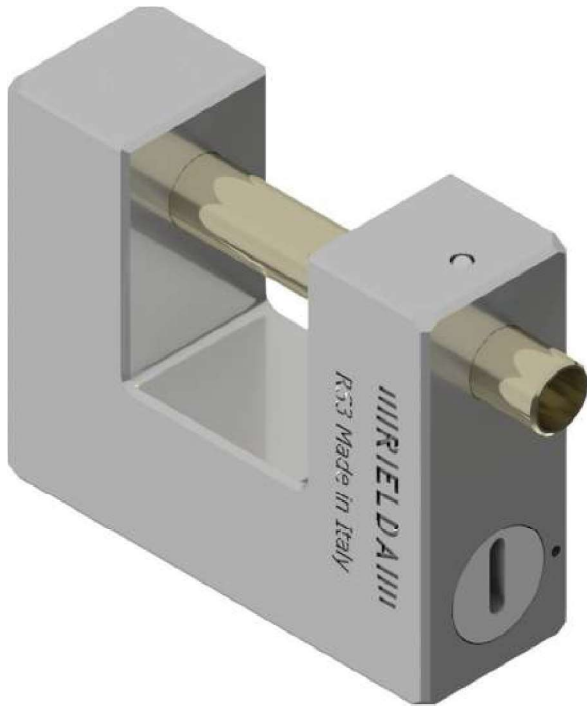
Characteristics:

- mechanical re-programmable security cylinder
- made in brass
- external finish on request (nickel/brass)
- cam tilt at 28° for tear proof function
- re-programming at 180°
- resistant to opening with method "bumping"
- resistant to opening with picks - "picking"
- resistant to drilling



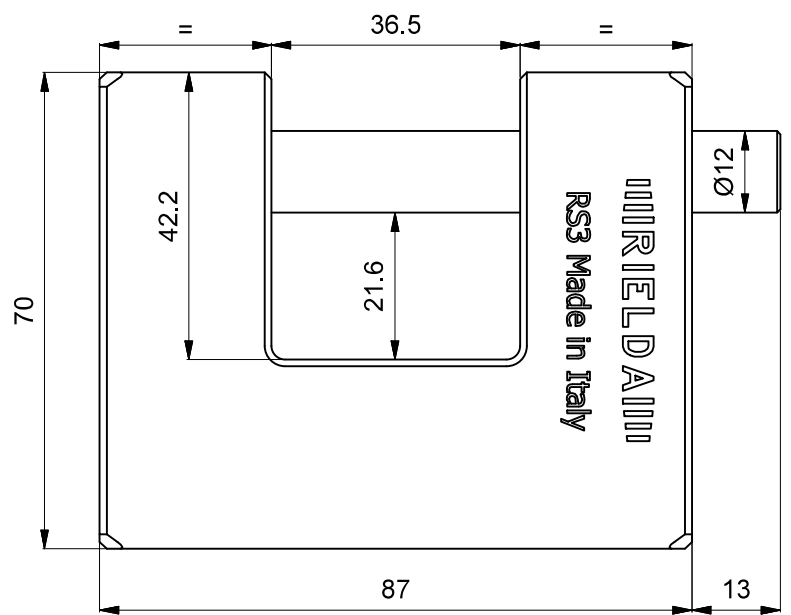
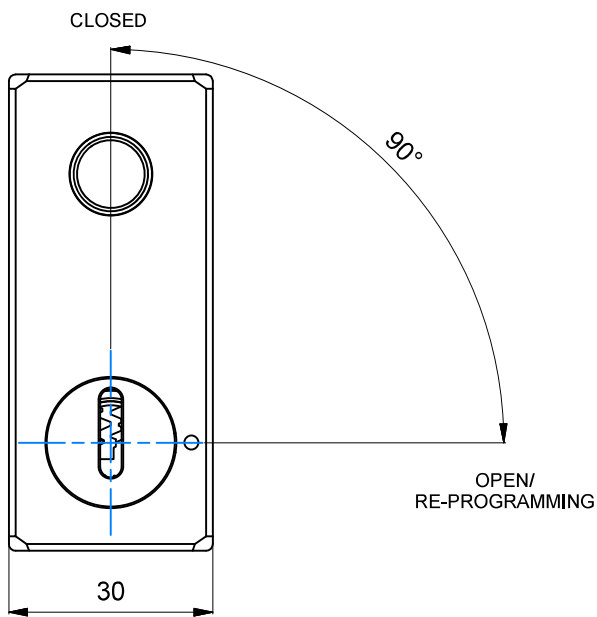
Available models in the table on next page

Armoured padlocks Series 800 Model 36-12 RS3



Characteristics:

- mechanical re-programmable padlock
- made in tempered steel
- external finish chemical nickel plating
- anti-drilling protection shield
- re-programming at 90° clockwise
- resistant to opening with method "bumping"
- resistant to opening with picks - "picking"



Shackle padlocks Model 900-50/29 RS3



Characteristics:

- mechanical re-programmable padlock
- made in brass (padlock case) and tempered steel (shackle)
- external finish in nickel
- re-programming at 132°
- resistant to opening with method "bumping"
- resistant to opening with picks - "picking"
- resistant to drilling

